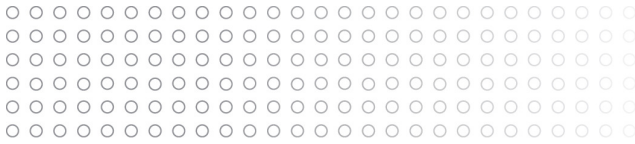


## OPTION express device on Mac OS X 10.5.x (Leopard)

1.	Previous .....	2
2.	Installation .....	2
3.	Connection .....	4

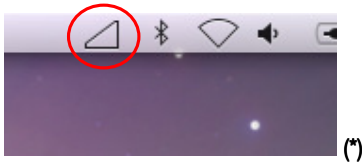


## 1. Previous

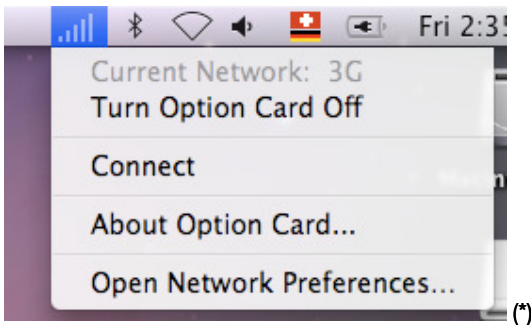
The Option express card must have previously connected successfully (OS X 10.4.10 or earlier or PC) and the PIN functionality must have been disabled in a hand-held device (Mac does not support PIN functionality).

## 2. Installation

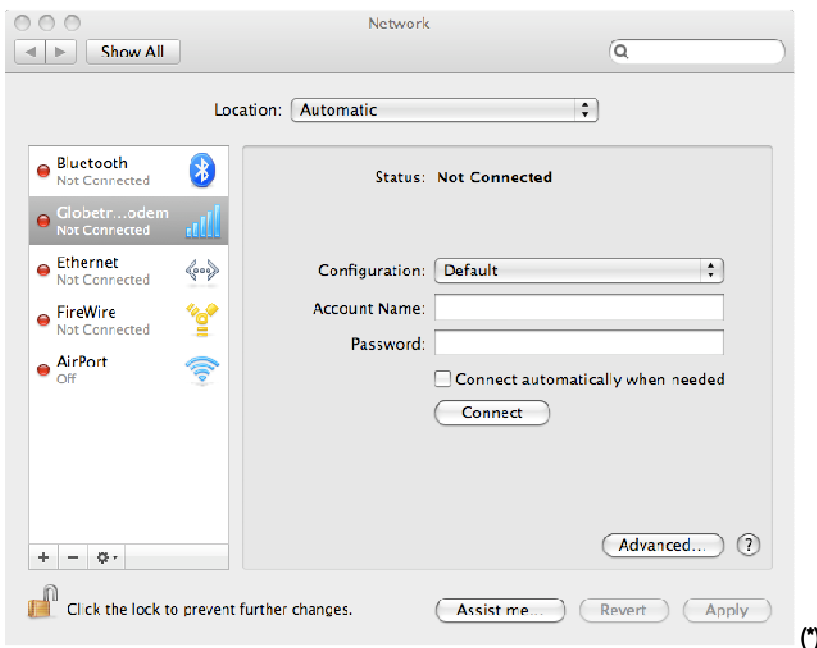
Please insert the device into the laptop and wait for the WWAN symbol.



A click on the symbol gives the following menu.

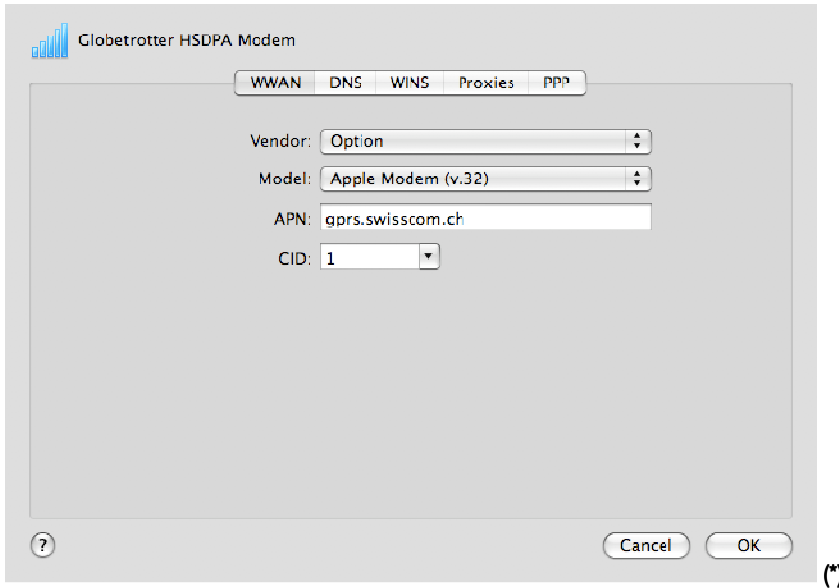
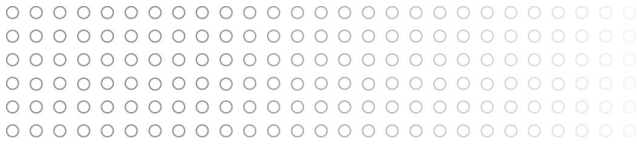


Please select <Open Network Preferences>



Please choose <Advanced>

(\*) Screenshots provided by courtesy of Swisscom Mobile



Please enter the following data:

*Vendor: Option*

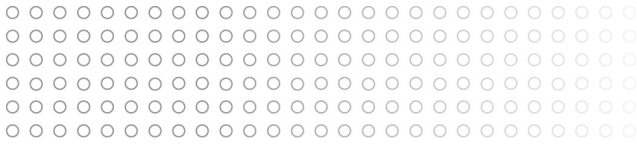
*Model: Apple modem (v.32)*

*APN: <apn from your operator>*

*CID: 1*

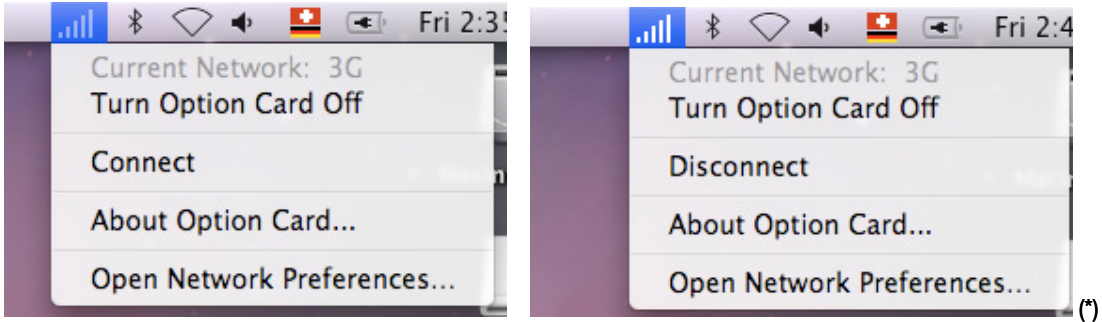
*Complete the settings by clicking <OK> & <Apply>.*

*(\*) Screenshots provided by courtesy of Swisscom Mobile*



### 3. Connection

Once again, please click on the WWAN symbol, giving you this menu.



One click on <Connect> or <Disconnect> will toggle the connection.



This symbol shows the quality of the connection as well as the status.

*(\*) Screenshots provided by courtesy of Swisscom Mobile*