



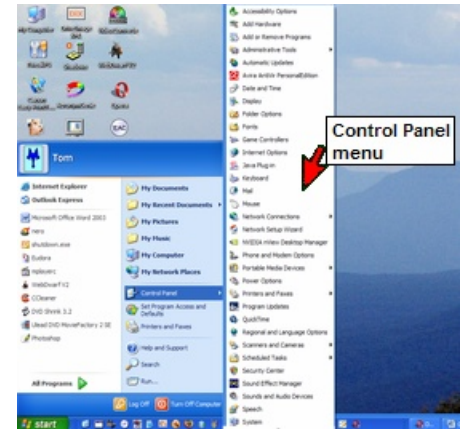
Coffee Break

Question on Software or Operating system.

Display the Windows XP Control Panel as a Menu.

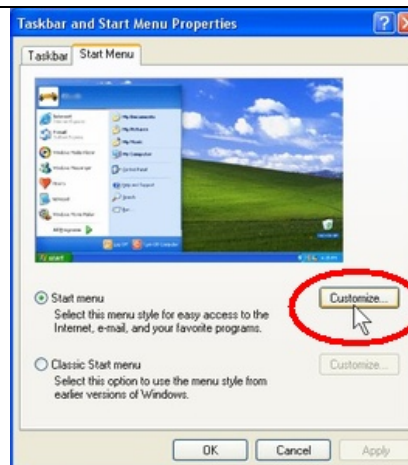
If you use the Control Panel frequently for uninstalling software or making other changes then you would normally, open the Control Panel in a separate window by clicking the "Control Panel" icon in the Start menu.

However, if you would prefer a different, and perhaps more efficient, method of accessing Control Panel items, you can have them display as a sub-menu on the Start menu, as shown in the image on the right.

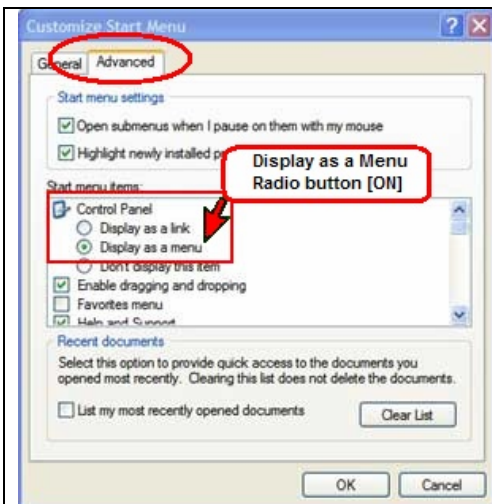


1 Right Click on Start

Right-click the [Start] button and click [Properties].



In the Taskbar and Start Menu Properties window, click the [Start Menu] tab (if it is not already open) and then click [Customize].



Click [Advanced] tab.

In the "Start menu items" section, choose "Display as a menu" as the "Control Panel" option.

Click [OK] to exit the "Customize Start Menu" window and then [OK] again to close the "Taskbar and Start Menu Properties" window".

Now, holding the mouse over the Start menu Control Panel icon will reveal a sub-menu that gives access to all the control panel items.

To go back to the default Control Panel display option, repeat the steps above but choose "Display as a link"