



Coffee Break

Question on Software or Operating system.

Windows Explorer Default Folder.

When you open Windows Explorer, it opens in your 'My Documents' folder.

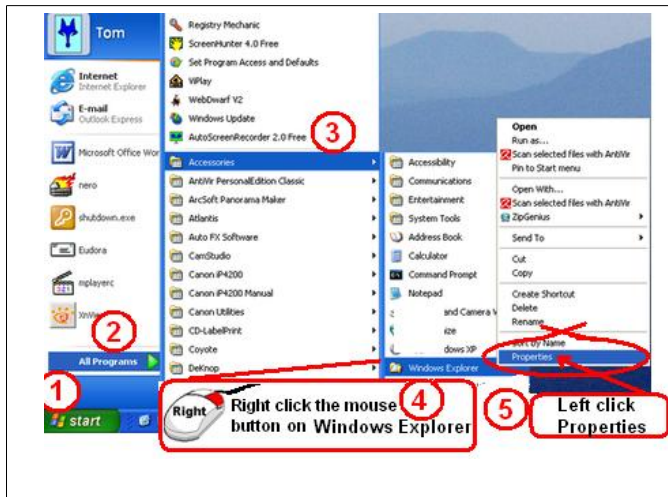
Hidden behind 'My Documents' on the 'C' drive root directory are other folders that were installed by other software.

To access then you need to click on 'C' drive to display all. You can change this default short cut to give you a broader overall view of all your folders and files.

How to change the way Windows Explorer opens.

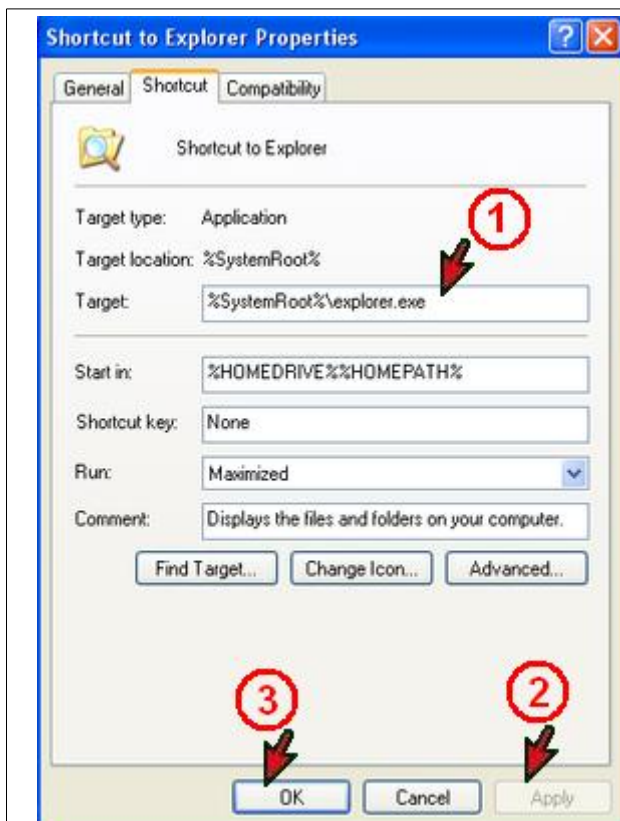
If you have a shortcut to Windows Explorer on your desktop then,

1. Right click [Windows Explorer]
2. Left click [Properties] (Then follow instruction in the lower table).



If you don't have a shortcut on your desktop follow the steps on the left.

1. Click [Start]
2. Point to [All Programs]
3. Point to [Accessories]
4. Right click [Windows Explorer]
5. Left click [Properties]



(1) In the [Target] box currently shows, %SystemRoot%\explorer.exe

At the end of the line type the characters /n, /e, /select, C:\

The line should now read.....

%SystemRoot%\explorer.exe /n, /e, /select, C:

Be sure you insert spaces in the correct locations. Then, click [Apply] followed by [OK].

%SystemRoot%\explorer.exe /n, /e, /select, C:

Blank spaces must be included

Now when you open Windows Explorer, it will display all of the folders and drives, not just 'My Documents'.