

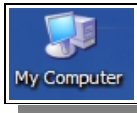


# Coffee Break

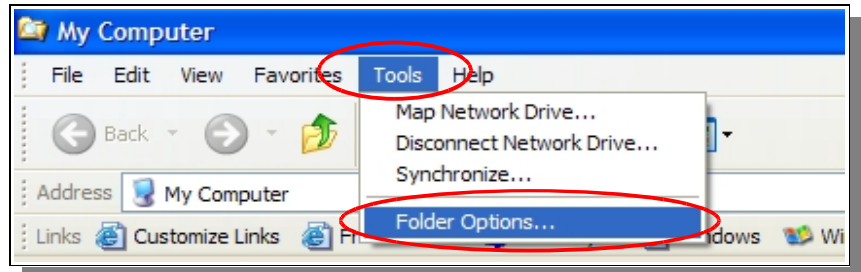
Question on Software or Operating system.

## Make icons in windows appear quicker.

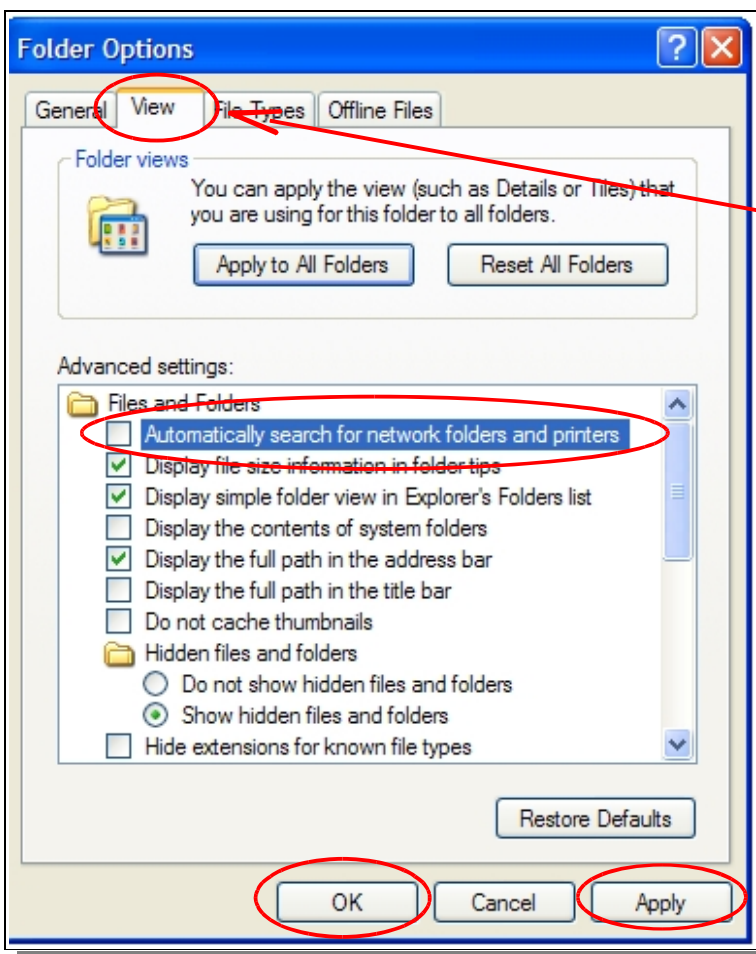
In Windows XP every time you open My Computer to browse folders, XP automatically searches for network files and printers. This causes a delay in displaying your icons. You probably see the " default" windows icon and as you scroll, it changes to the correct icon. This is how to stop that...



Open My Computer.



Click on the **Tools** menu and select **Folder Options...**



Under [**Folder Options**] select the [**View**] tab, uncheck the very first box that reads "**Automatically search for network folders and printers**".

Click [**Apply**] then [**OK**]  
You should see a dramatic increase in speed when Windows displays your icons.