

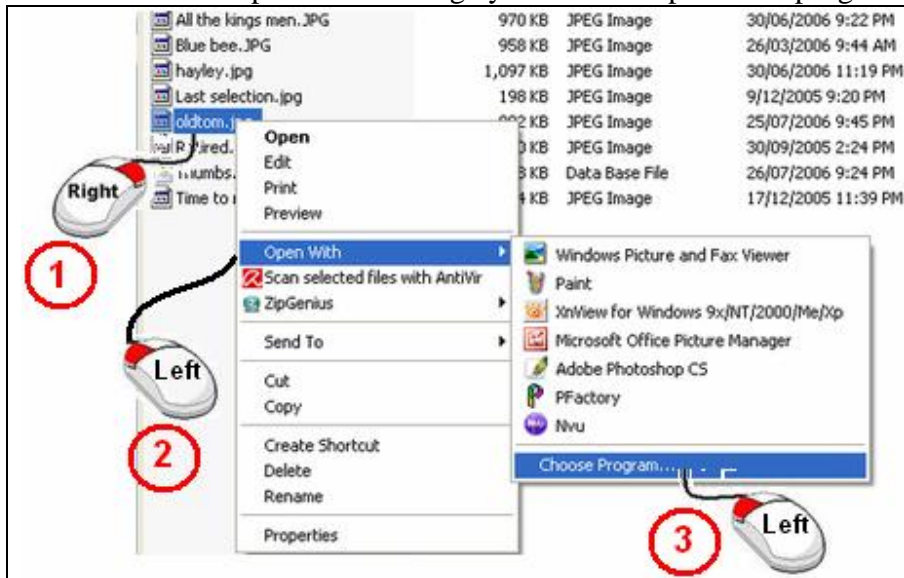


Coffee Break

Question on Software or Operating system.

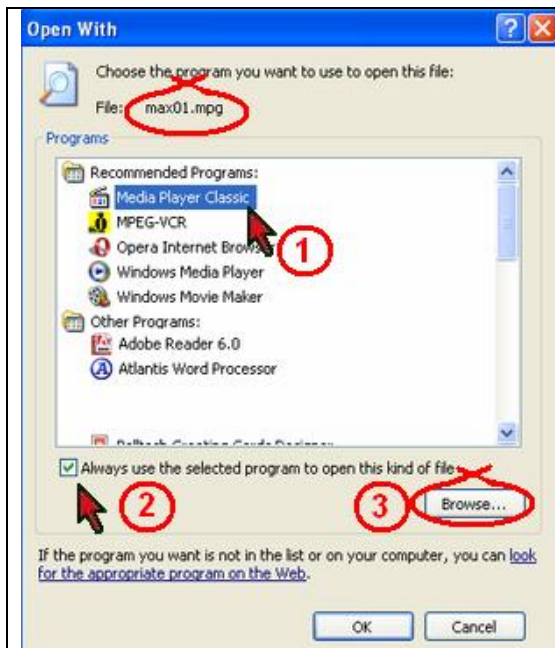
How to Change File Association

Sometimes when you load a new program on your computer, that new program usually assigns itself as the main program to open up all the associated files that it can. This is often true with graphics programs that want to open up all your bmp, gif, and jpg files for you. This change can be annoying if you were comfortable using another program. Use the steps below to assign your files to a particular program.



**Open Windows Explorer.
Open folder with files.**

1. Right click on a file to change.
2. In the option menu, left click [Open With].
3. In 2nd option menu left click [Choose Program].



[Choose Program] opens the [Open With] menu.
The example here is selecting a program to open (max01.mpg).
Circled in red at the top of the menu.

1. High Light the program you want this file to open with.
2. Place a tick in the box marked....
'Always use the selected program to open this kind of file'
3. If your program is not listed in the Recommended Programs, Click on [Browse] and choose the program required.
4. Click [OK]

Every time you click on a mpg video file it will open with, Media Player Classic.

Max01.mpg is a video file, there are some video files Windows Media Player won't open.

Using 'Media Player Classic' usually solves the problem.
Freeware download from the address below.

http://www.afterdawn.com/software/video_software/video_players/media_player_classic.cfm