



Coffee Break

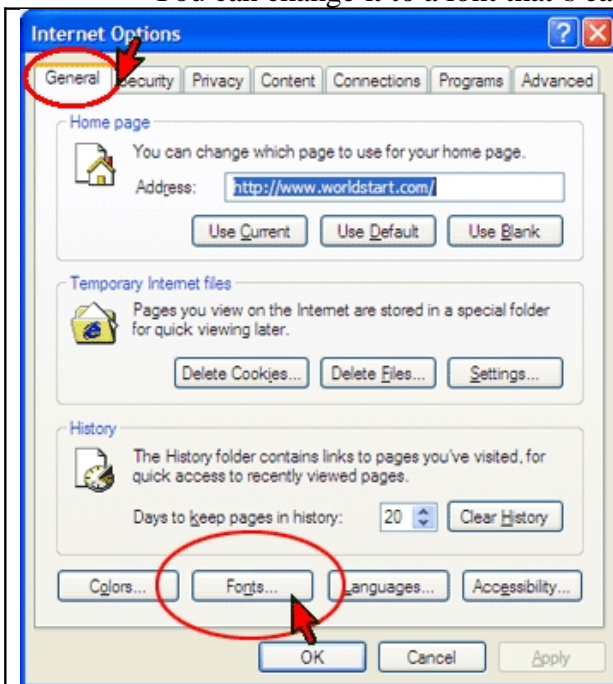
Question on Software or Operating system.

Internet Explorer Default Fonts.

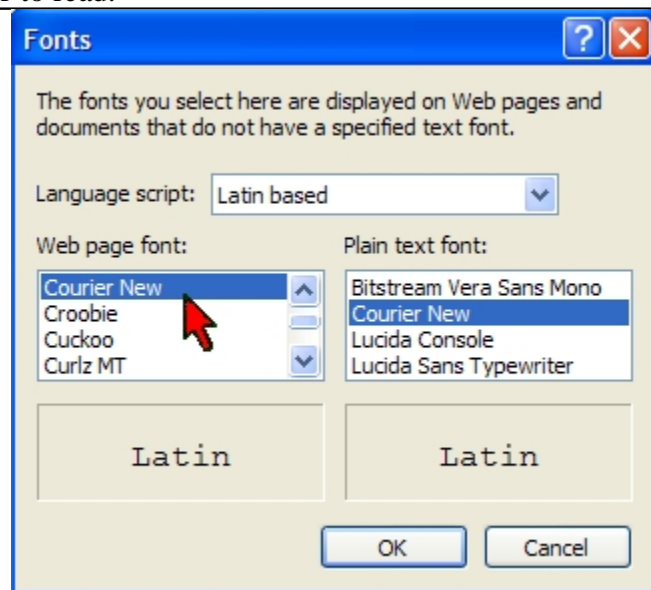
Web pages you visit use your default font to display their text? For example, Internet Explorer's default font is *Times New Roman*. So, if you land on a web page that has no default font specified, you'll automatically see it in Times New Roman.

You may find the Times New Roman fonts hard to read as it's more compacted than Courier New for the same size. The above Times New Roman and this sentence in Courier New are both at size 12.

You can change it to a font that's easier to read.

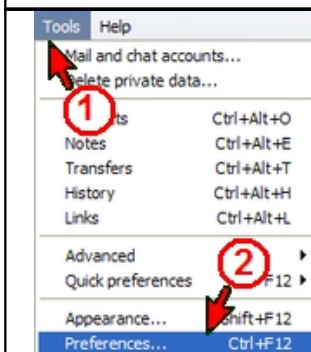


1. Open Internet Explorer, then click [Tools] menu, [Internet Options.]

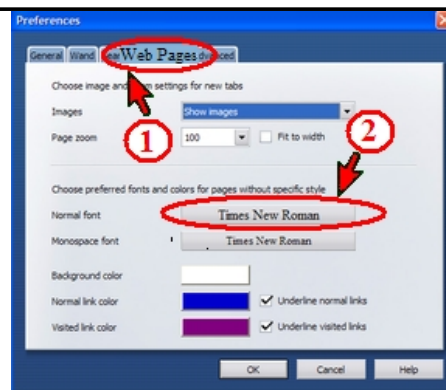


Choose your font. Don't worry too much about the "Plain text font", this one is already selected as New Courier by default.

In the [Web Page Font] section. Just click on New Courier to see a small preview. When you selected your font, click [OK].



Anyone using Opera web browser. The text options are found in [Tools] then [Preferences].



(1) Click [Web Pages] tab and (2) choose your font.