



Coffee Break

Question on Software or Operating system.



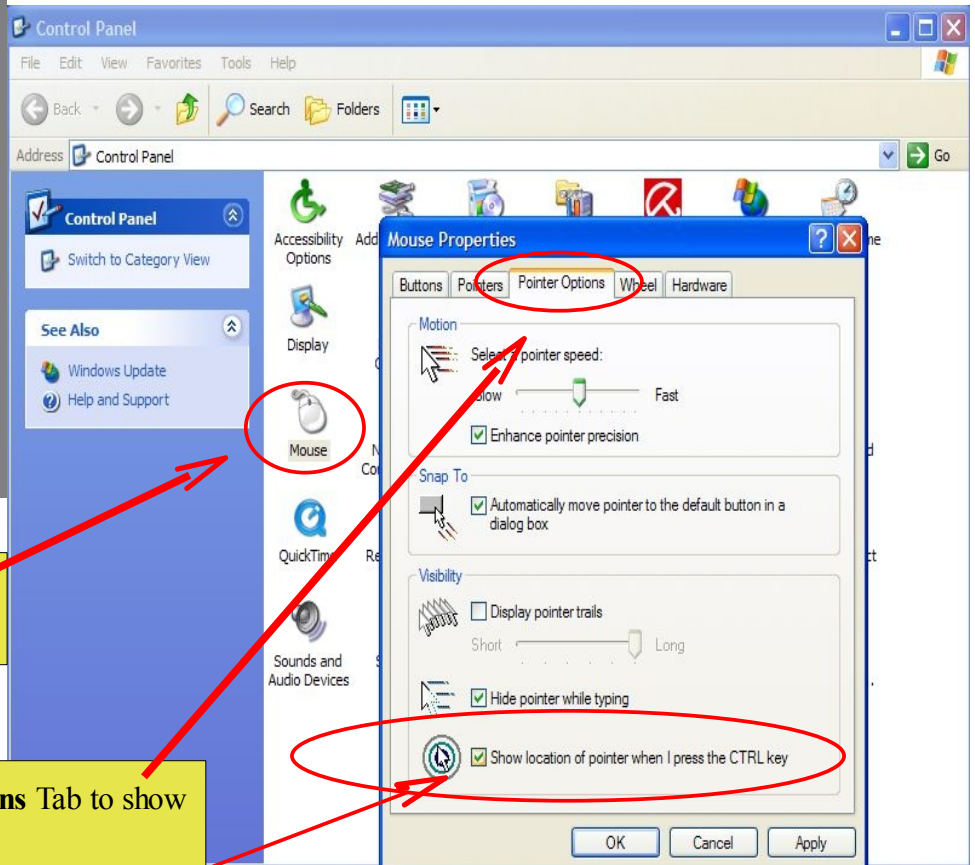
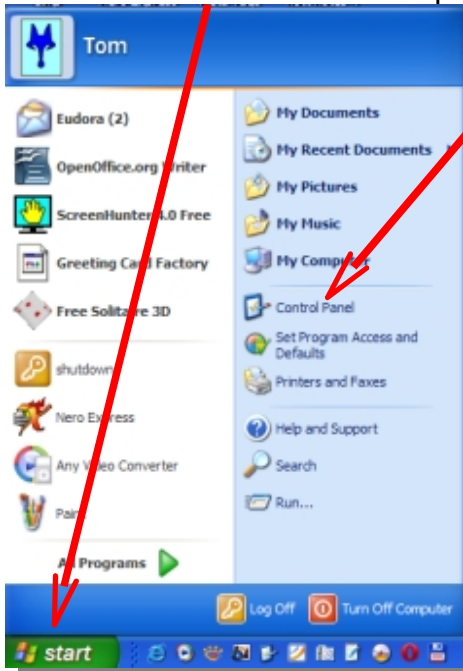
Find Your Mouse Pointer.

Sometimes with a content-rich word document or websites with complex interfaces you may find it troublesome finding the mouse cursor.

This sometimes happens with a Power Point Presentation program or when you are working on a word-processor.

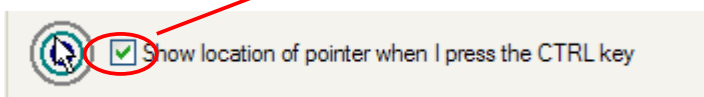
You can have Windows XP quickly find your lost mouse pointer with one keystroke.

Left click the **start** button and open your **Control Panel**.

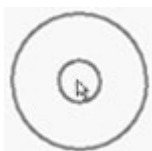


In the Control Panel click the **Mouse Icon**.

Click the **Pointer Options** Tab to show the mouse options.



Place a check (tick) next to “**Show location of pointer when I press the CTRL key**”.



Now whenever you press the **CTRL** key a locator ring will draw your attention to where your pointer is.