

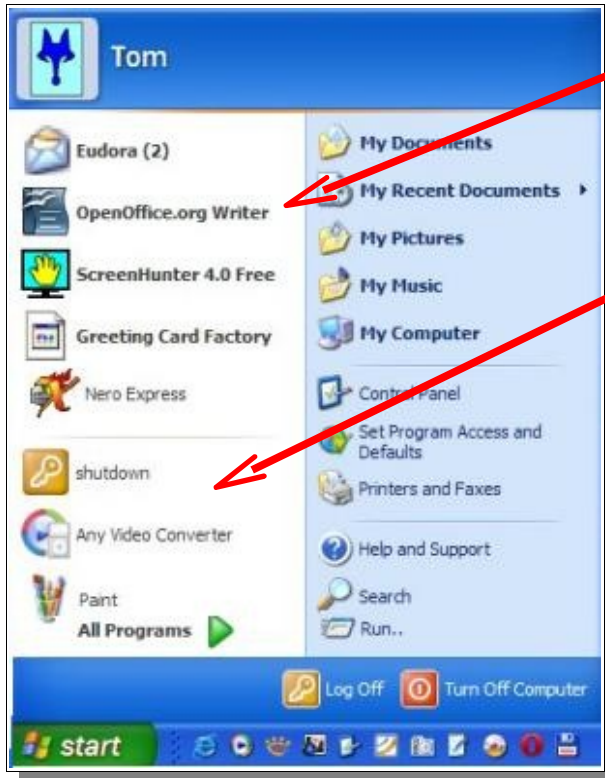


Coffee Break

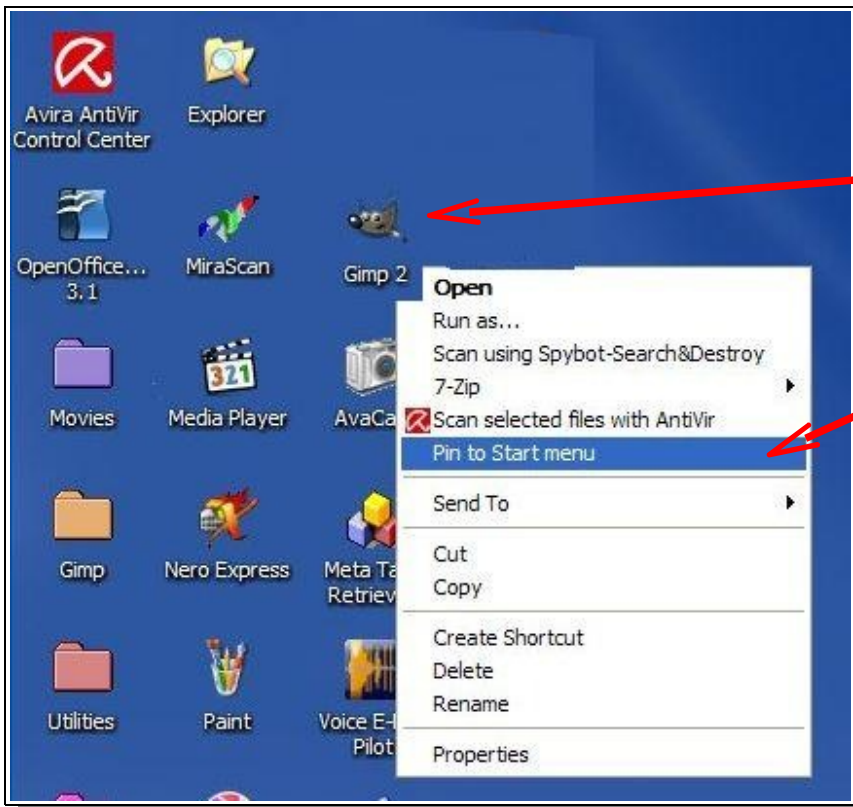
Question on Software or Operating system.

PIN QUICK LAUNCH ICON TO START MENU.

The Windows XP Start Menu is divided into two sections. The top half of the menu is reserved for **pinned** items. Because I use OpenOffice quite often, I have pinned the quick launch Icon to the Start Menu; making it accessible at the click of a mouse button.



The bottom section of the Start Menu is reserved for frequently used programs, or programs that I use on a regular basis. Though this may sound the same as a pinned menu, the items on the list change dynamically based on what I've been apt to do lately. So if I've been using '**Any Video Converter**' a lot, it's icon will show up, but if I stop using it for awhile and make use of something else, that icon will show up.



To pin a short-cut to the Start Menu, **right-click** on an icon on your desktop and choose "Pin to Start Menu".