



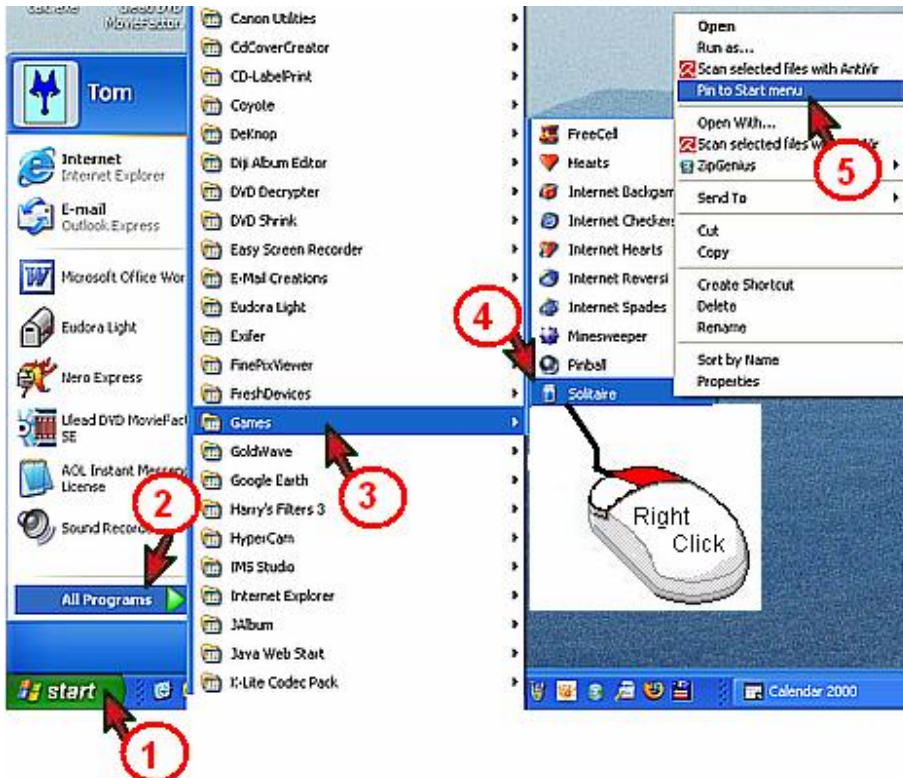
Coffee Break

Question on Software or Operating system.

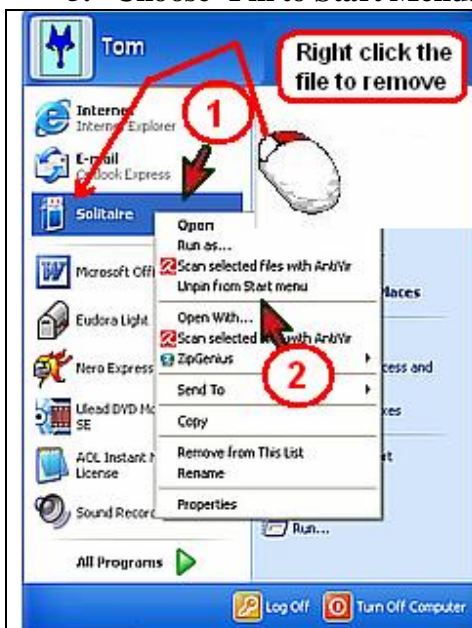
In Windows XP 'Start Menu' the computer will list the most six, recent programs opened. Above the list of six programs there is a small grey line separating another (generally two programs), placed there by Windows XP install.

Internet Explorer and E-mail Outlook Express. They remain there permanently.

If there is a favourite program that is used frequently, you can choose to 'Pin to Start Menu' that program.



1. Left click [Start]
2. Select [All Programs]
3. Choose folder of program (open folder if more programs present)
4. Right click the program name.
5. Choose 'Pin to Start Menu'.



To remove from the pinned position,
Left click [Start]

1. Right click the program.
2. Left click
'Unpin from Start menu'

The file or program is not lost, just removed the Short Cut.