



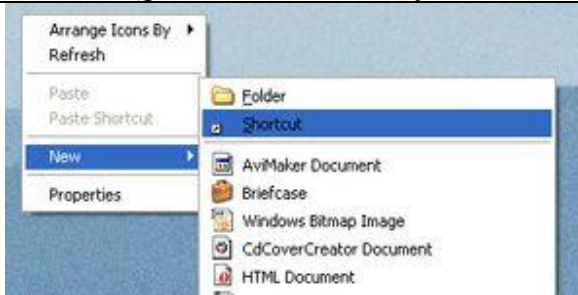
Coffee Break

Question on Software or Operating system.

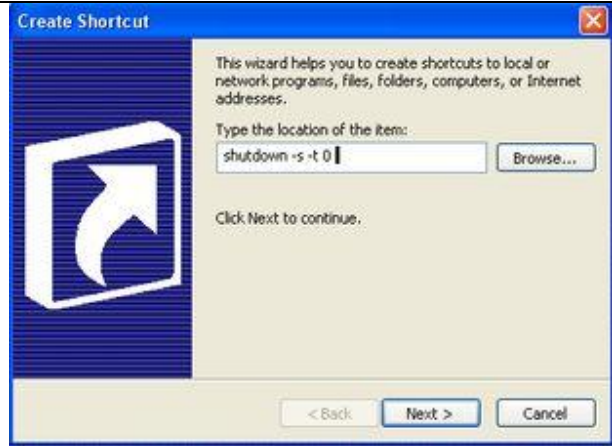
Quick Shutdown Short Cut.

To shut down your XP system computer, takes three steps. [Start] [Turn Off Computer] then [Turn Off]. There is a quick way to do this by making a (Shortcut) on the desktop.

To make a Quick Shut Down icon, follow these instructions.



Right click the mouse button on an empty area of your Desktop. The above menu will show. Choose [New], from the second menu select [Shortcut].



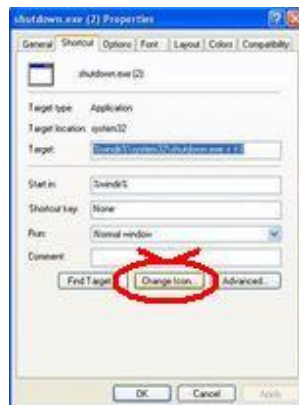
In the [Create Shortcut] wizard, enter

shutdown -s -t 0

Then Click [Next]. From the wizard's next screen click [Finish].



You now have a quick shutdown shortcut with a blank Icon on the desktop. To give the shortcut an icon. Place the arrow on the icon and Right Click the mouse button. Click Properties, last item of the option box.



From the Shortcut Properties menu left click [Change Icon].



A Change Icon warning will show that there is no Icon to change. Click [OK] to Choose an Icon.



There are many Icons to choose from. Select one and Click [OK].

You now have a quick way to shutdown. Just click on the [Shutdown.exe] icon and your computer will shutdown in one step instead of three.

Note the shutdown -s -t 0 (the 0 on the end is a zero).

-s calls the shutdown
-t is the time in seconds
0 is the time delay (zero)

For example, shutdown -s -t 15
Waits for 15 seconds before shutting off the machine.