



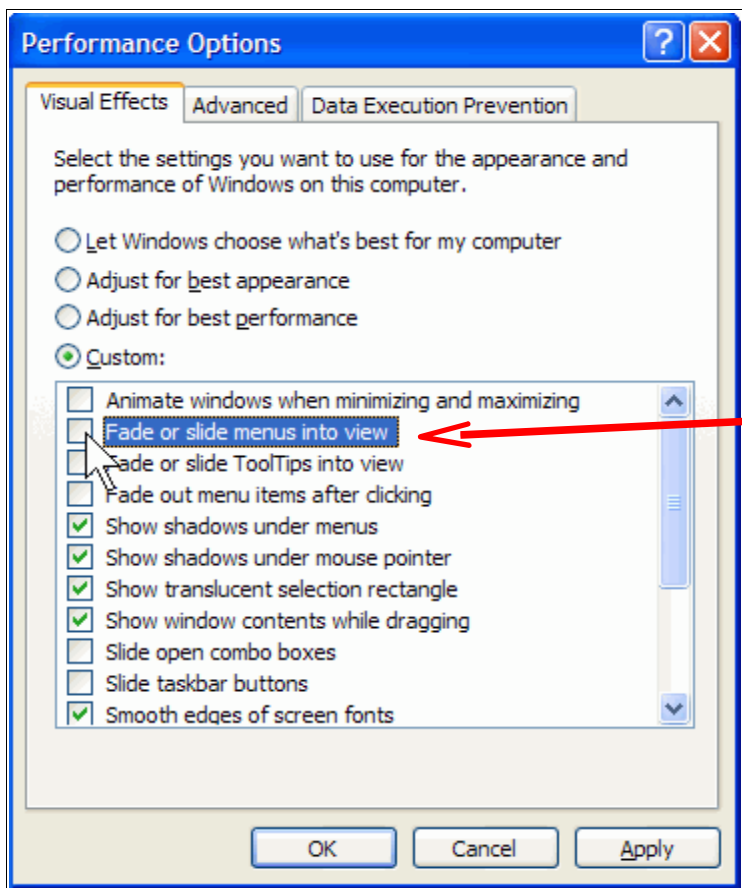
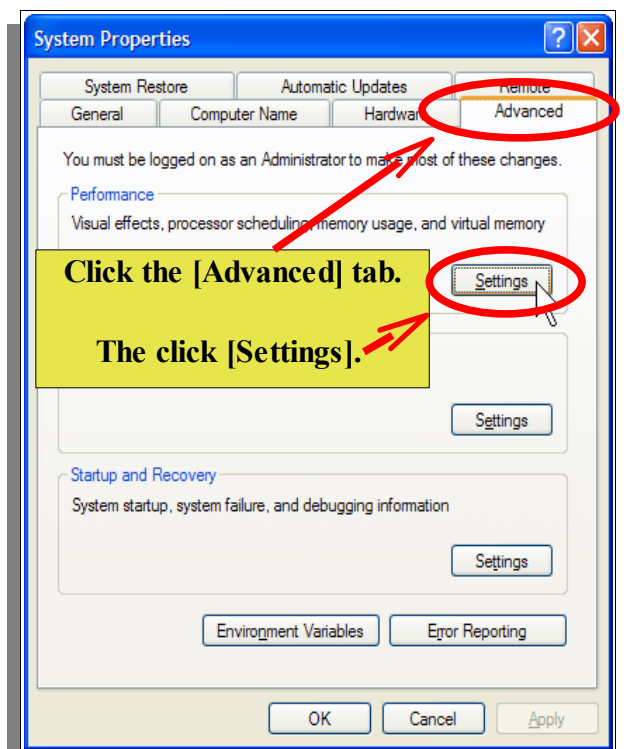
# Coffee Break

Question on Software or Operating system.

## Speed up menu display.

Windows XP uses many visual effects. One of these effects allows menus to fade into view when you open them. This visual effect may never have noticed it under normal daily use ; *however, the effect does cause menus to take a little longer to appear.* On a fast computer, this shouldn't be an issue. But you can make menus display faster.

**To speed up menu display.** Click [Start]. Right-click [My Computer], and then click [Properties].



Finally, open the [Visual Effects] tab.

Clear the.....  
[Fade or slide menus into view]  
checkbox.

Click [Apply] then [OK] and [OK] to  
close the system properties.

Now when you click a menu,  
it will appear almost instantly.