



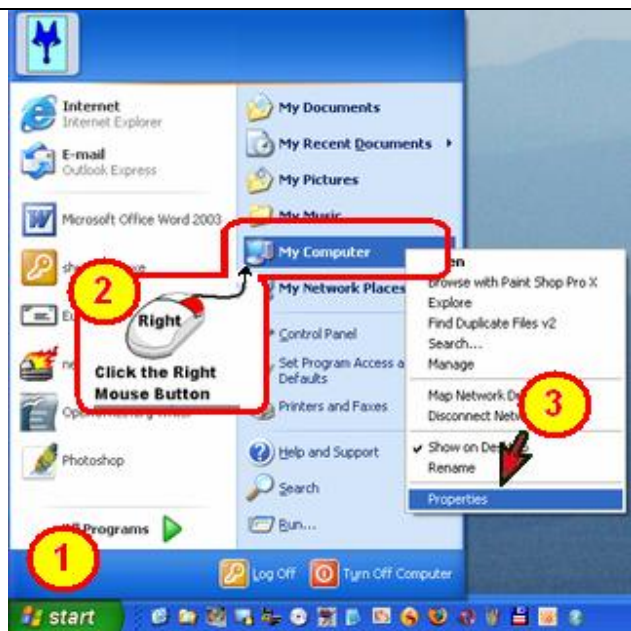
Coffee Break

Question on Software or Operating system.

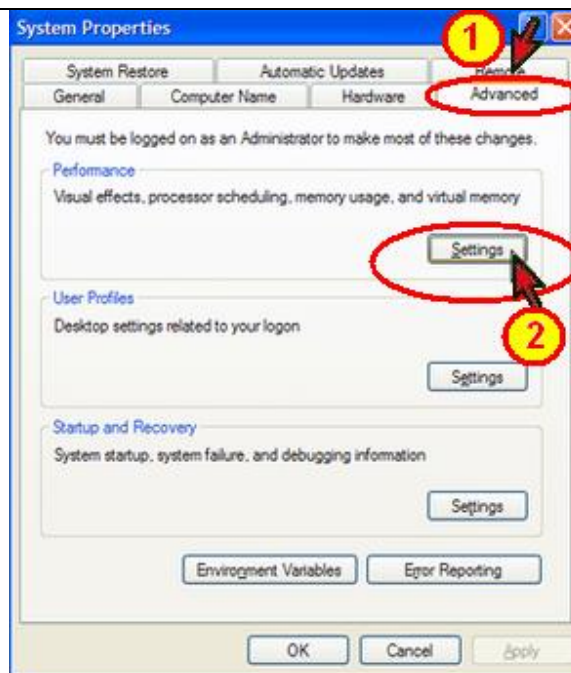
Speed up Menu Display

Microsoft Windows XP uses many visual effects in their operating system. One of these settings allows menus to fade into view when you open them. The effect is smooth and on a fast computer you may not noticed any delay. The effect does cause menus to take a little longer to appear with virus checking software running in the background.

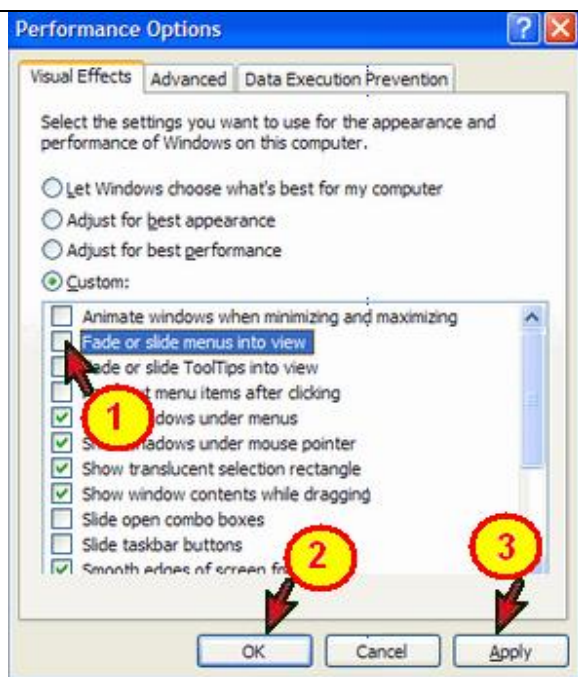
You can turn off this visual effect and speed up menu displays.



Click **[Start]**, Right-click **[My Computer]**, and then click **[Properties]**



Click the **[Advanced]** tab. In the Performance area, click **[Settings]**.



On the **[Visual Effects]** tab in the **Performance Options** dialog box, clear the **[Fade or slide menus into view]** check box.

Click on **[Apply]**
Then Click **[OK]**.

On clicking OK you are returned to the **System Properties** dialog box, click **[OK]**.

Now when you click a menu, it will appear almost instantly.