



# Coffee Break

Question on Software or Operating system.

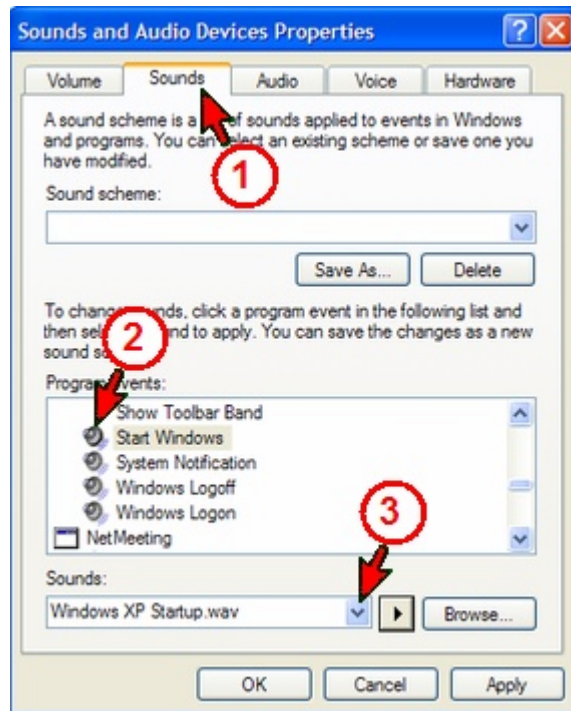
## Windows Sound on Startup & Shutdown.

The startup and shutdown chimes slow down both processes. The sound only last a few seconds but the computer needs to locate the file then play the sound. You can turn this feature off and slightly speed up the startup and shutdown process.

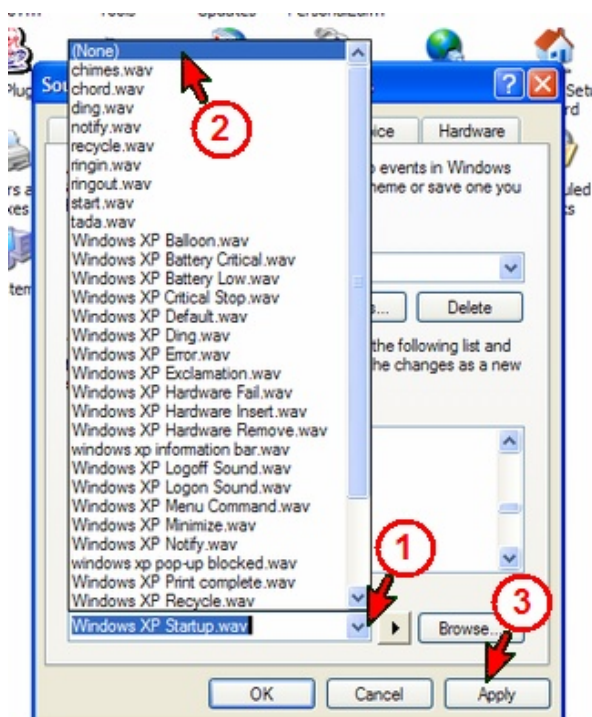
Open the **[Control Panel]** and click the **[Sound and Audio Devices]** icon.



1. Click the **[Sound]** tab.
2. Scroll down and find **[Start Windows]** sound program event.
3. Click the down arrow to open the **[Sounds]** selections.



In the **[Sound]** selection, scroll up and click on **(None)**. Then click **[Apply]** followed by **[OK]**.



To cancel the shutdown chimes. (1) Click **[Sound]** tab. (2) Scroll down and find **[Exit Windows]**. (3) Open the **[Sound]** select options and follow the same steps on the left panel.

