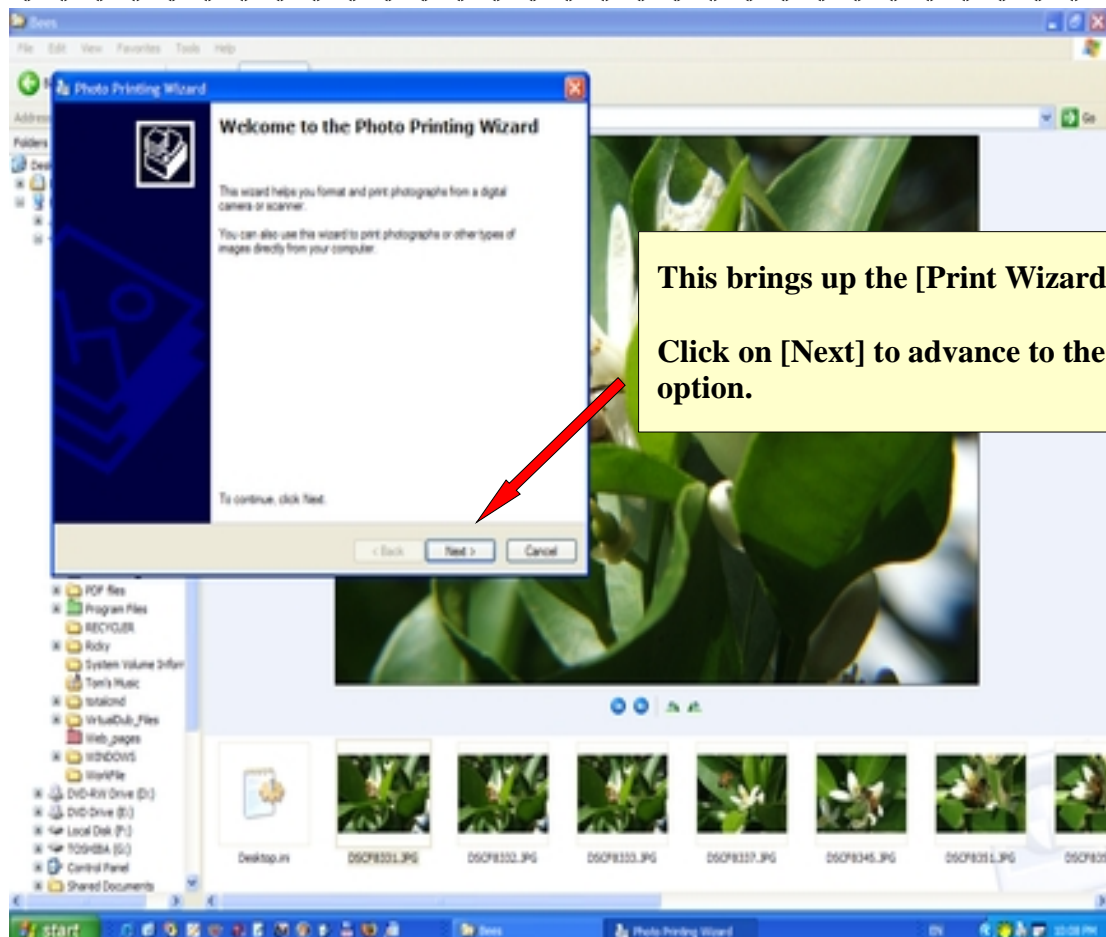
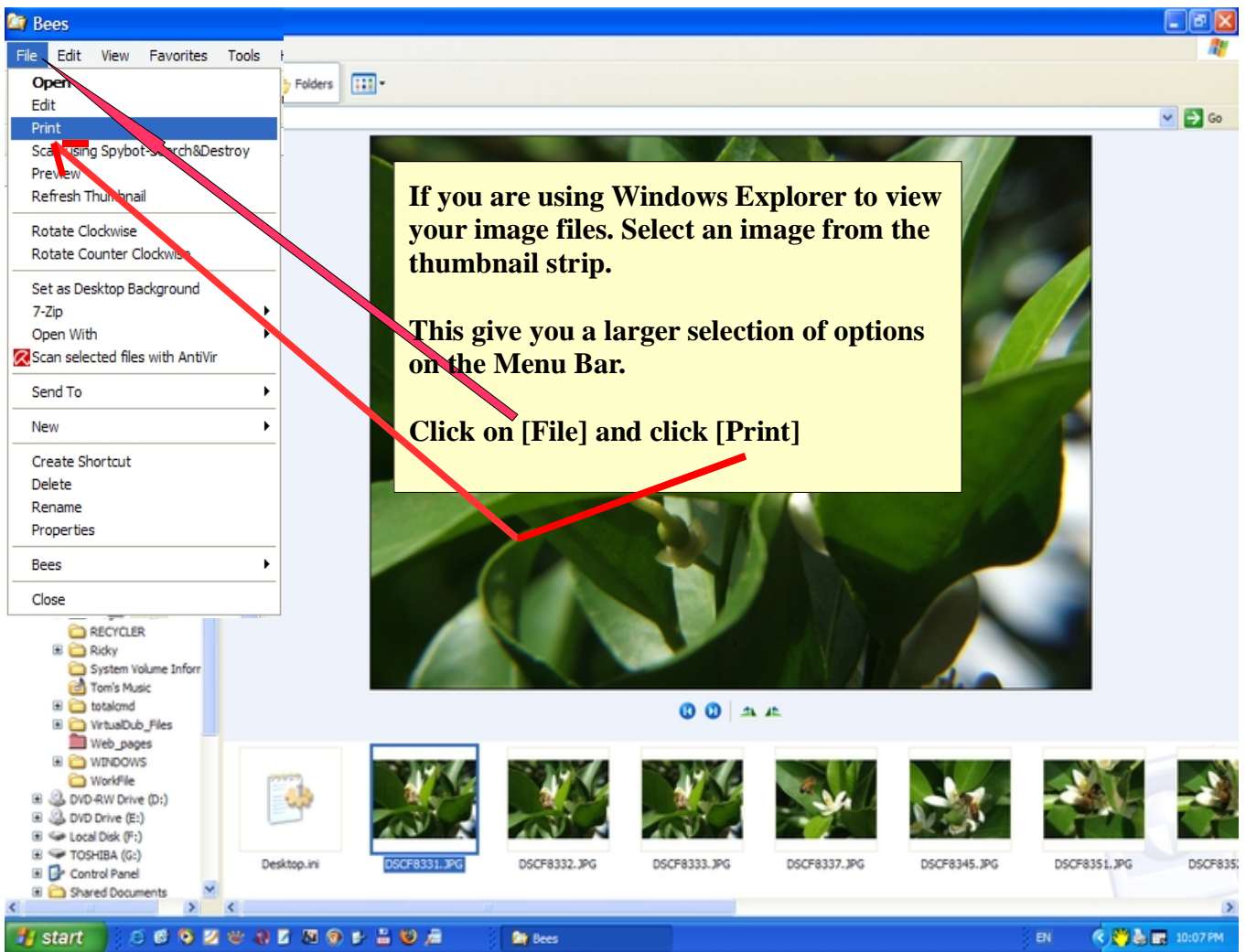
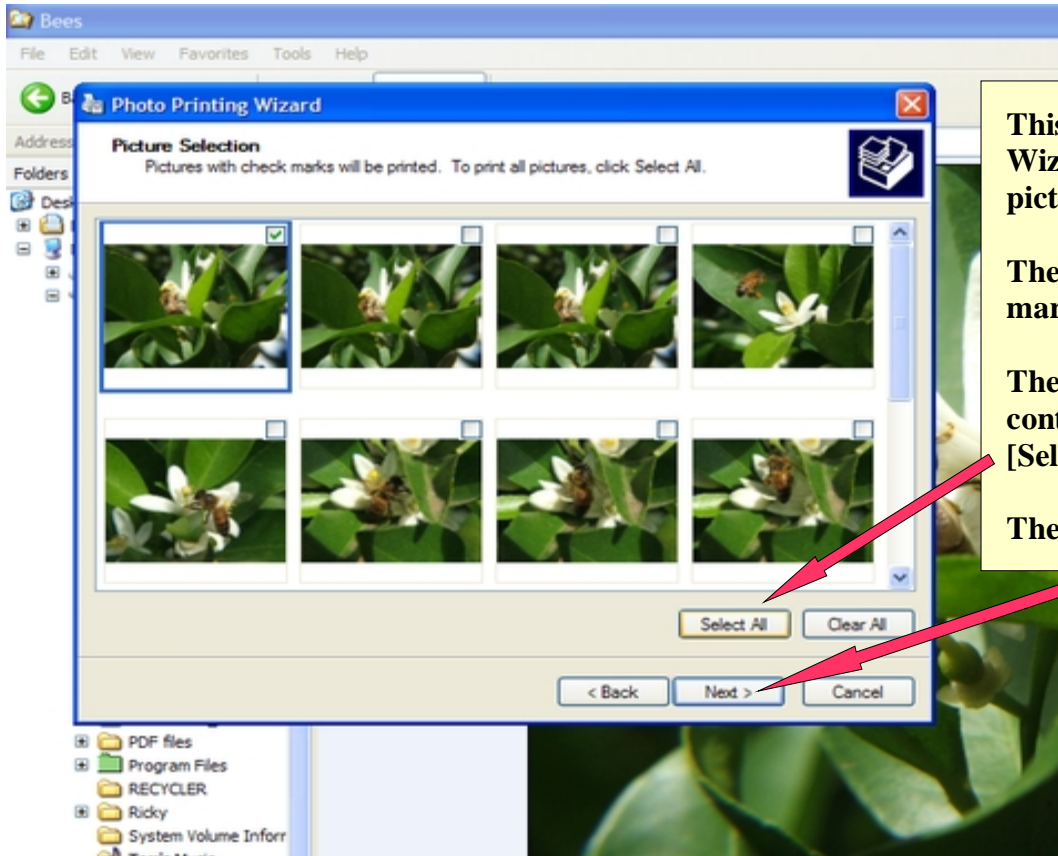


MAKING A CONTACT SHEET



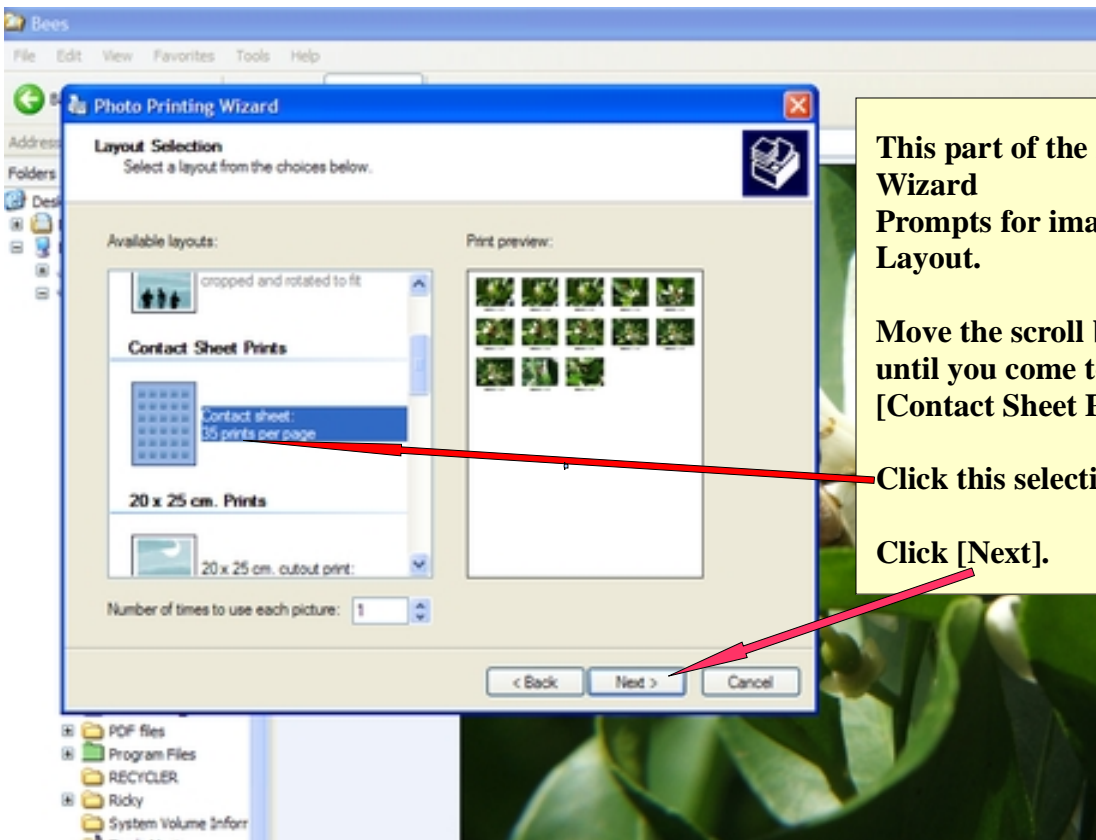
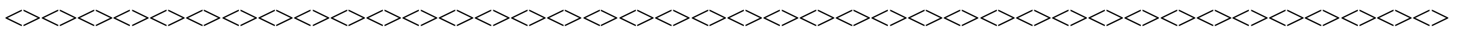


This section of the Print Wizard prompts to make a picture [Selection].

The pictures with check marks will be printed.

The tutorial is for making a contact sheet so click [Select All]

Then click [Next]



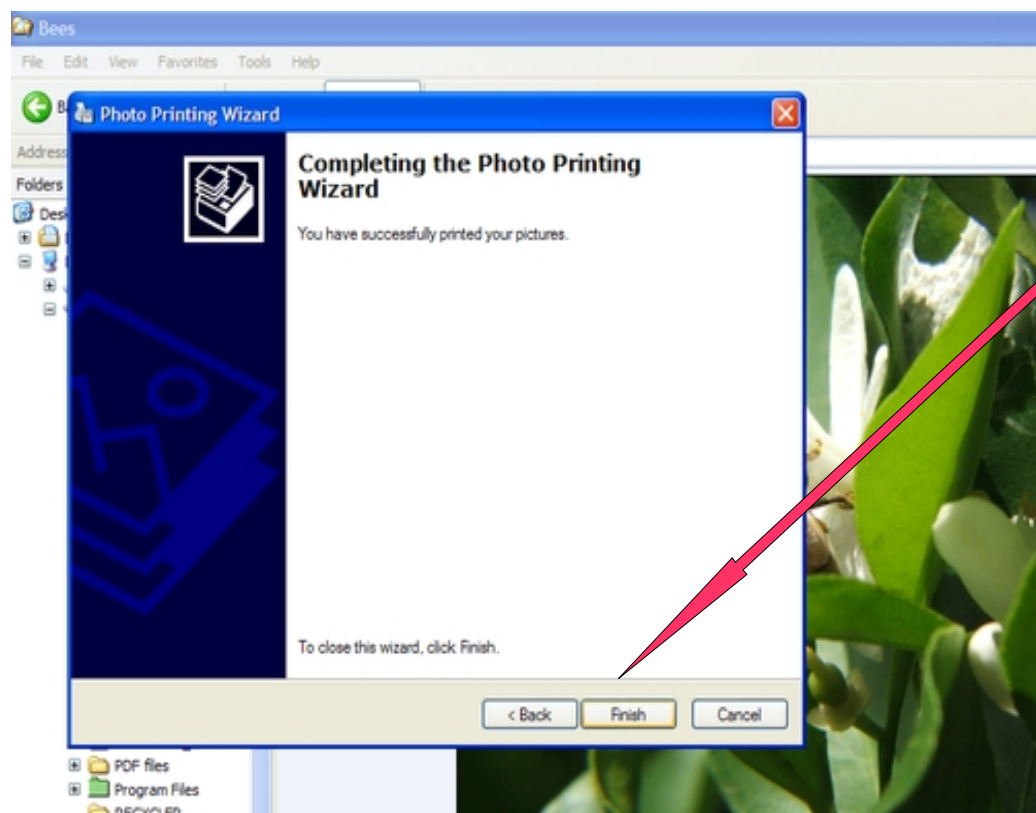
This part of the Print Wizard Prompts for image style Layout.

Move the scroll bar down until you come to the section [Contact Sheet Prints].

Click this selection then...

Click [Next].

The Print Wizard now prints your 'Contact Sheet' if there are more photos than the 30 for the Contact Sheet then the Wizard will continue printing on a new sheet until printing is completed.



Click on [Finish]
Task completed.

It is always recommend that when you download your pictures you immediately burn a CD. After all CD are cheap.

If you burn a CD you can put it away in a safe place and treat it like you would film negatives. Then, any weird thing you create with **Paint Shop Pro** won't spoil your original.

In order to keep track of all those pictures and all those CDs, the best method is to print a **contact sheet(s)** from the CD and store the CD and contact sheet(s) in an archival 8 ½ x 11 page protector in a binder.

It is best to place your image CD in a CD envelope as some page protectors may have a coating on them and this could cloud your CD and make it useless.