



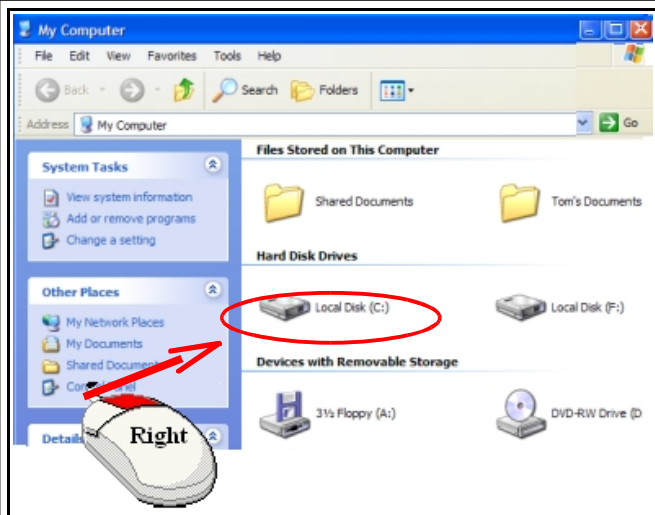
Coffee Break

Question on Software or Operating system.

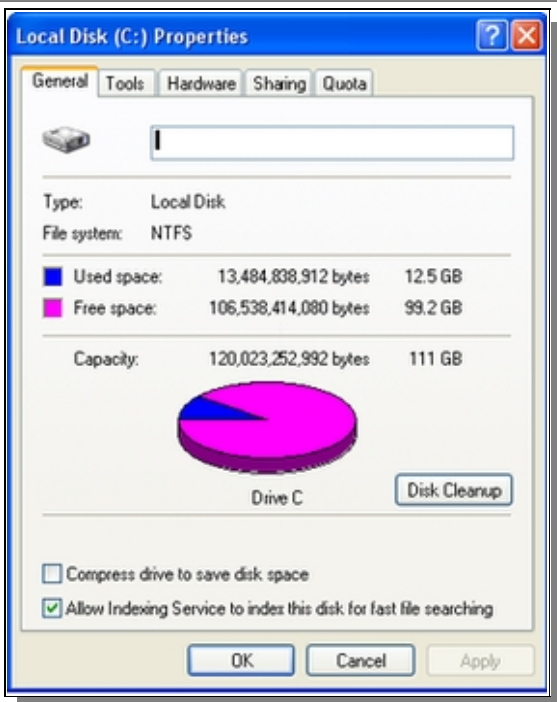
What is the size of my hard drive?

To visualize the size of your hard drive can be a little hard so Microsoft displayed the amount of space available with a pie chart. You can find this information by Left Clicking on **My Computer**. An Explorer type window opens.

Place the arrow cursor on the **Local Disk (C:)** and right click.



Left click on Properties.

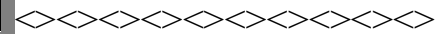


The 'Properties' dialog shows the Capacity of your hard drive, how much space used and the amount of free space available.

A Pie Chart shows the amount of space used and available. Visually or comparing disk space with something we know, could go like this.



- 1 3 1/2 floppy = 1.47 megabyte
- 100 3 1/2 floppies = 10.5 megabytes
- 1,024 3 1/2 floppies = 1 gigabyte
- 81,920 3 1/2 floppies = 80 gigabytes



An 80 gigabyte drive has

85,899,345,920 bytes available.

Photo is a stack of 100 3 1/2" 1.47 meg floppies.

mega-

prefix, often meaning "large, great," but in precise scientific language "one million" (megaton, megawatt, etc.), from Greek megas "great, large, mighty". Mega began to be used alone as an adjective in 1982.

A **gigabyte** (pronounced GIG-a-bite with hard G's) is a measure of computer data storage capacity and is "roughly" a billion bytes. A gigabyte is two to the 30th power, or 1,073,741,824 in decimal notation.