



Coffee Break

Question on Software or Operating system.

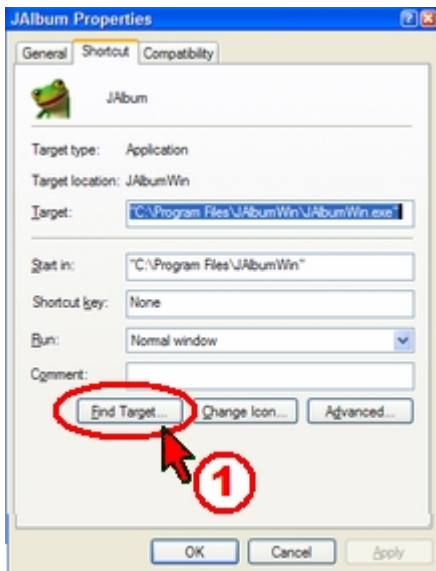
Find Target (program folder).

Have you ever needed to find a program's folder? It may have a text file on using the software.

Usually, you open Windows Explorer, then the Program Files folder, then sifting around through all the sub-folders until you find what you're looking for. Even then you sometimes have to sort through more sub-folders before you actually get to where you want to go.

There must be an easy way to find your target.

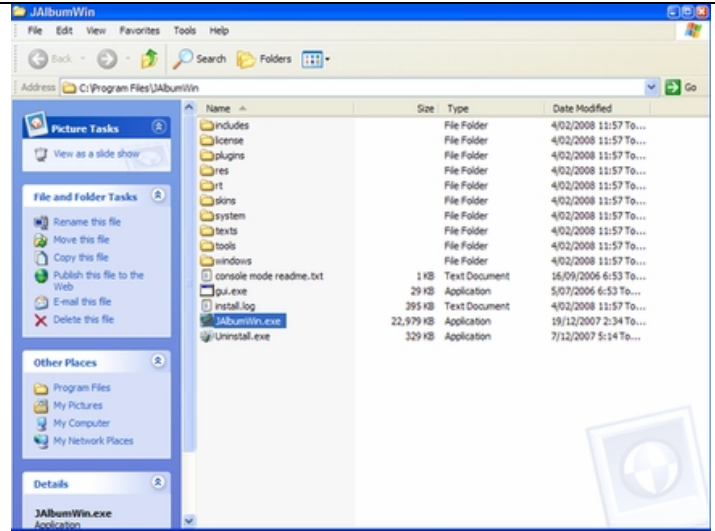
If the program has a Desktop icon, then you only need to hold down the **[Alt]** key and double click the icon. This opens the **[Properties Menu]**.



In **[Properties]**

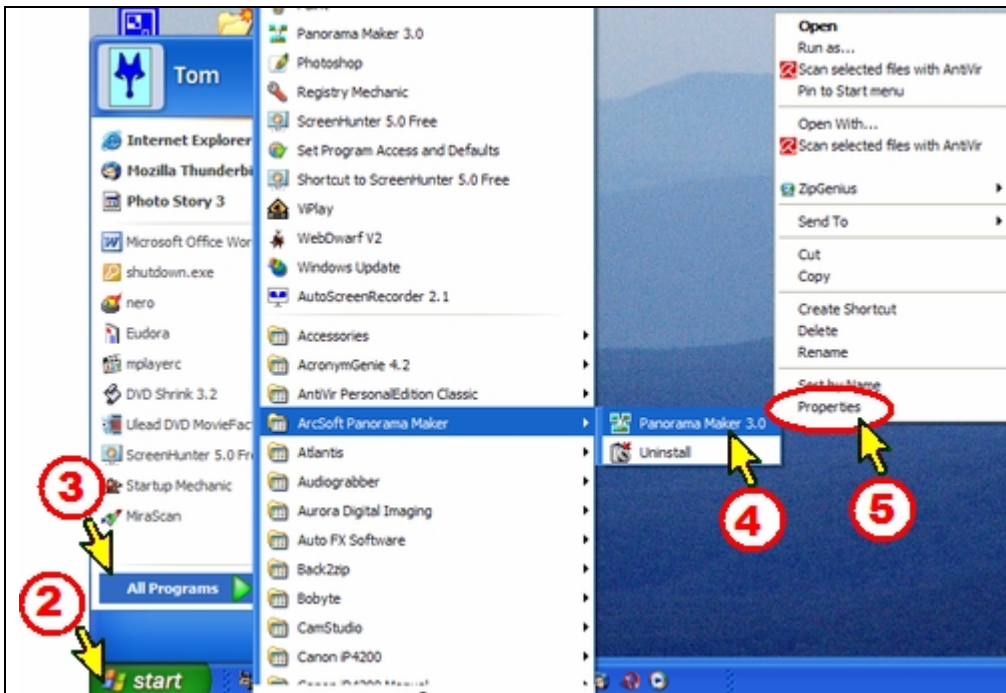
Click **(1)**
[Find Target]

This takes you to the program folder and highlights the programs exactable file.



Example: Opened **[Program Files]** and **[JAlbum]** folder.

High lighted the exactable file and listed all other files.



If the program you want to find the folder for is not on your Desktop.

Then **(2)** click **[Start]**, **(3)** Click **[Programs]**.

Select the program you want **(4)**

Right click and choose...

(5) **[Properties]**.

When the **[Properties]** menu opens,

Revert to item **(1)** above and click **[Find Target]**.