



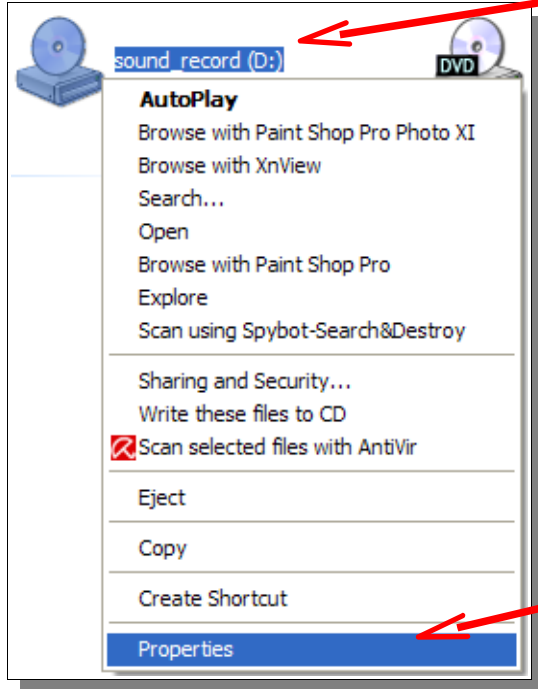
Coffee Break

Question on Software or Operating system.

WINDOWS XP CD BURNER (SET SPEED).

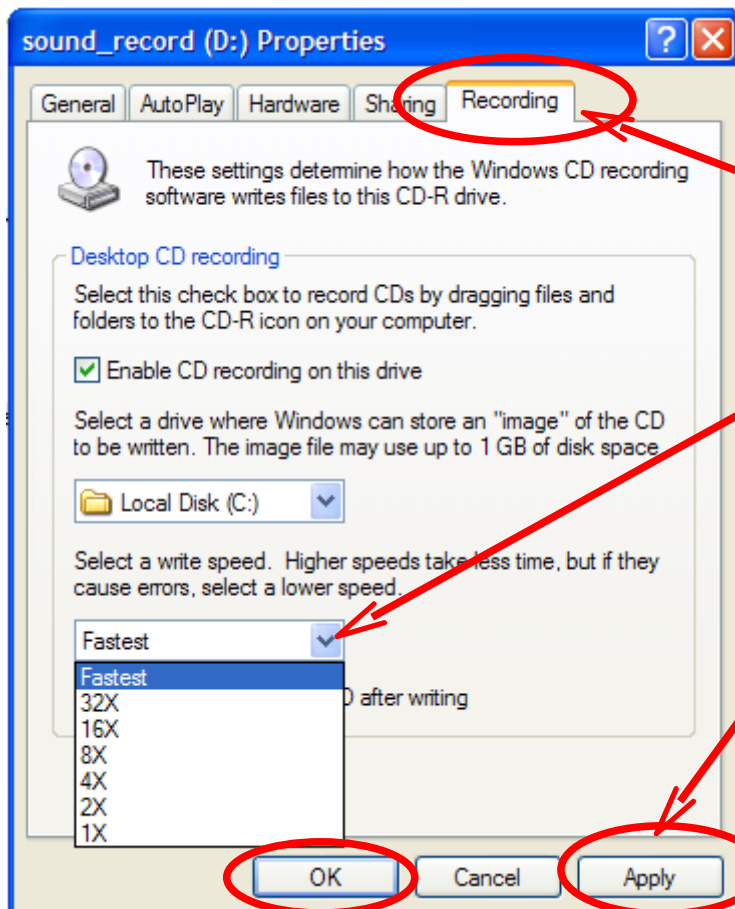
If you use Windows XP built-in CD burner it may be best to set the burn speed at a slower rate. By default the setting is at the fastest speed.

Click on 'My Computer'



Right click the mouse button
On your 'D' drive.

Left click on 'Properties'



Click on [Recording] tab.

Click down arrow and select the burn speed.

Click [Apply] then [OK].