




# Coffee Break

Question on Software or Operating system.

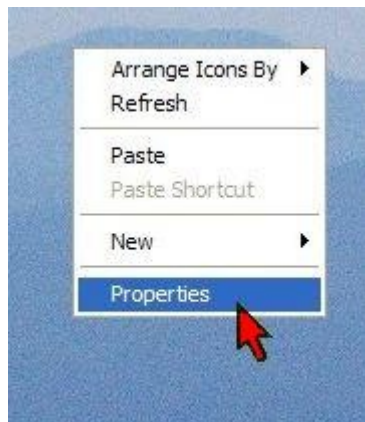
## FONT SMOOTHING FOR INTERNET EXPLORER AND WINDOWS EXPLORER

 <p>Font smoothing Regular:      Anti-aliased: <b>P</b>            <b>P</b> At 200% zoom, see the difference!</p>	<p>Does your monitor, show jagged, blocky text... You can make those fonts a little easier to read?</p>
--	---

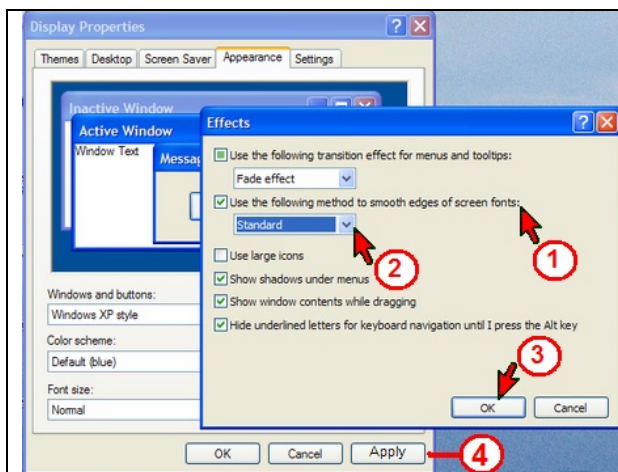
Anti-aliasing is the technical name for a process that smoothes out the jagged edges of pictures and fonts. Most graphics programs do it automatically; however, Windows will do it for screen fonts in **Internet Explorer and Windows Explorer** as long as you select it from your Display Properties menu.

To do this, first open the Properties menu by right-clicking on your desktop and selecting properties.

Right-click on your desktop and selecting properties.



(1) Click on the Appearance tab , then click on the (2) Effects button .



In the [Effects] menu make sure the box next to, [Use the following method to smooth edges of screen fonts.] Is checked. Item (1).

(2) Standard method is selected.

(3) Click [OK].

(4) make sure you click [Apply] to finalize the selection.

Smaller fonts won't show much difference, anti-aliasing only affects larger text, so you may not notice any effect in Windows Explorer or on your desktop. However, headlines on web pages and any larger text will be smooth and beautiful.