



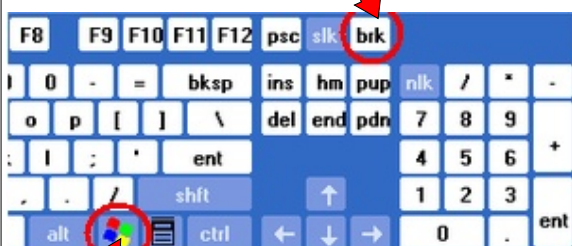
Coffee Break

Question on Software or Operating system.

Is your Windows XP a x64 Edition or a 32 bit operating system?

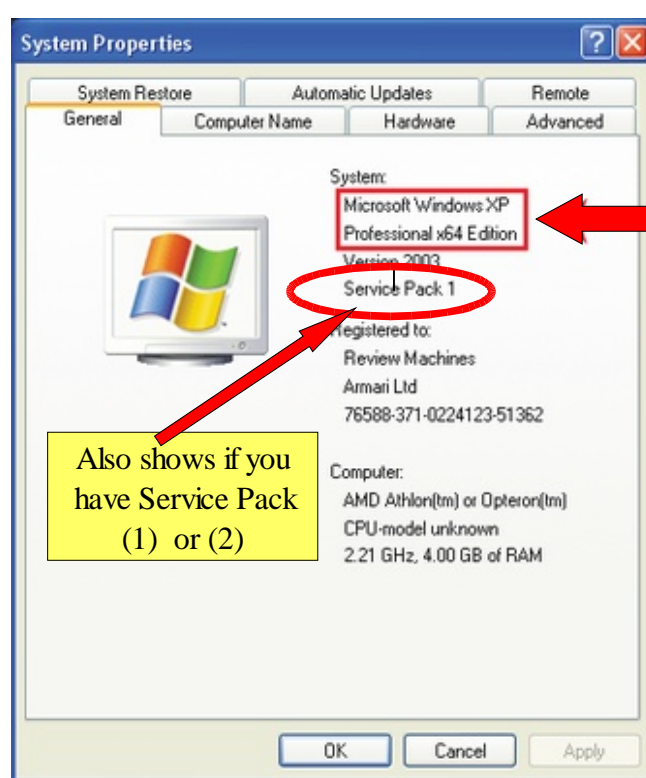
Some software require a 64 bit processor to obtain the best results, like a video capture. Also they need a fast USB port to transfer the data. Here is how you can find out if you have a 64 or 32 bits processor. The faster USB transfer port software came with '**Windows Service Pack 2**'. Both this information can be found in the [System Properties] window.

For Windows XP users – Hold down the [Windows] Key, and then press the [Pause Break] Key.



This is a short cut to the [System Properties]

The other way is [Start] [Control Panel] then clicking the [System] icon.



This window shows all of the basic information about your computer.

If it doesn't specifically say Windows XP x64 Edition as shown above, then you're running a 32 bit operating system.

For **Windows Vista** users – The same applies: press and hold the **Windows Key** and then press the **Pause Key**. Your system properties window will show. You'll notice a specific field that says "System Type", which has your OS type listed after it. Vista will actually tell you 32 bit or 64 bit.

