



Editor:
Tom Lehane

Penrith Valley Seniors Centre
86 Station Street Penrith N.S.W.2750

**January/February
2011**

Email pvscc@internode.on.net

President: George Bell	Tel: 4721 3681	Member: Norm Cobban	Tel: 4736 3513
Vice-President: Alan Lees	Tel: 4736 5541	Member: Graham Haddock	
Secretary: Zillah Warner	Tel: 4729 3096	Member: Bryan Blake	
Treasurer: Bert Foster	Tel: 4754 3008	Member: Jim Tiberi	Tel: 4735 1981
Social Committee: Zillah Warner, Anne Roddick		Webmaster: Tom Lehane	Tel: 4721 5375

Visit the clubs' web page for training courses, www.users.on.net/pvscc/training.htm
Visit the clubs' web site, www.users.on.net/~pvscc/index.html

The President, George Bell and members of the committee wish everyone a Happy New Year.



Weekly Schedule for Computer Courses

Mondays: 9.30am to 11am Beginners & Do your own thing. Tutor: Zillah Warner 11.00 am to 12.30 pm Making a 'Scrapbook' using software., Tutor: Zillah Warner	Tuesdays: 9.30am to 11am Beginners & Do your own thing Tutor Bert Foster <u>Windows Live Movie Maker.</u> 11.30am- 1.30pm Tutor Bryan Blake
Wednesdays: 9.30am to 11am Using the Software (Gimp) Tutor Tom Lehane	Thursdays: 9.30am to 11am Card Making, Beginners and Do your own thing. Tutors Clare Dixon & Zillah Warner.
Fridays: 9.30am to 11am Memories to TV. Tutors John Windle, Norm Cobban: Beginners & Do your own thing. Tutor Alan Lees	Fridays: Tutor Jim Tiberi Class time 11.00 am to 12.30 pm Using Microsoft Office suite

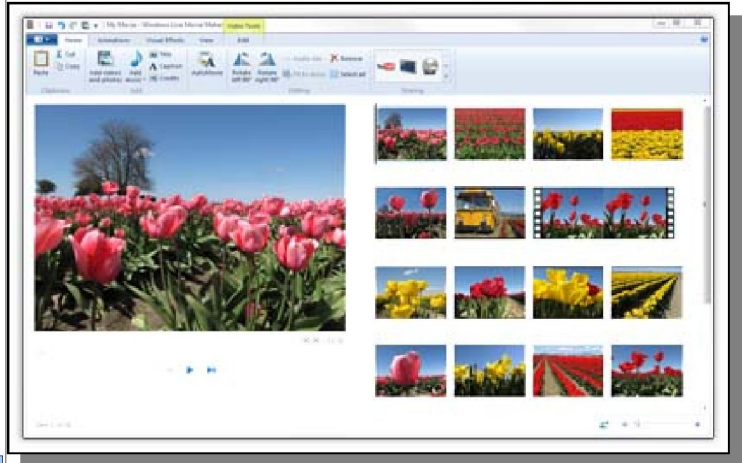
Date Club Resumes.



The date stated in previous newsletters, was well, a little out. Please note the club resumes on the 31st of January. So the first class back will be Zillah Warner's class, 'Do your own thing & Scrapbook'. 9.30am Monday 31st January.

Windows Live Movie Maker

New class on this free download for windows 7.



The new Windows Live Movie Maker now extends support to include high definition (HD) video, in addition to standard definition (SD) video. There is a new AutoMovie feature that allows user to create movies or photo slideshows out of photos and video clips quickly.

Join Bryan Blake's class on Tuesdays 11.30am to 1.00pm to learn how to use **Windows Live Movie maker.**

Phone 47218878 for details.

Christmas Party The clubs Christmas party was well attended and all present had an enjoyable time.



Bert Foster supervising while George Bell cooks.

Members enjoying lunch.





You want a bigger capacity SD card for your digital camera because it will also take Video as well as still images, the normal card you have (maybe 2gb) this soon fills up when used with video.

Using the Internet to shop for a reasonable price card can be a trap. Most searches for reasonable priced cards will direct you to Ebay.

And a large majority of these cards are from China.

Be warned most are fakes. The one shown on this page, states it's 32gb card with write speed of (6).

The card is actually a 4gb card with a write speed of (2).

Your camera sees it as a 32gb card because the fraudsters change the partition sizes to read as 32gb not 4gb.

So what will happen if you have one of these fake cards installed in your camera?

The camera will function normally until it reaches the true 4gb level. Then as you continue to use the camera the software in your camera keeps trying to write the data to the card because the information on the invalid partition table tells it there is plenty of room.

The result is damaged files and video that is in most cases, unrecoverable.

Due to the way digital video cameras write files to a SD card, some of your video maybe recoverable.

As you take each segment of your video.

Example: take one short footage of video then stop, the video is written in short blocks so some maybe retrieved else you loose the lot.

In fairness, Ebay will refund you under their PayPal plan. They also close down any company that comes to their notice that is sell fake products.

As with most fraudsters they just don't close down, many if not all just start-up under another name and address.

Is there a way I can find out if I'm unfortunate enough to have a fake card?

There are two programs available free on the internet that will write data to the cards and report back on their true write speed and capacity.

Address are.....

<http://www.bizzntech.com/2008/03/22/test-a-usb-flash-drive-with-check-flash>

<http://kikuyumoj.com/2008/02/03/test-your-faulty-usb-stick/>

The last address, the software is in German but has a **button for English**, (both) are straight forward to use and small in size.

It is not only SD cards that have been programmed as fake sizes, USB flash drives are subjected to the same invalid partition table addressing.

Another site to help you identify a fake SD card.

http://www.overclockers.com.au/wiki/Fake_Memory_Cards

The best place to buy SD cards and USB flash drives are from an Australian camera stores or big department stores. At least you can confront them face to face, they can't afford to sell fake goods.

Hypertext Transfer Protocol.

Normally when you type a web address in your web browser you send a HTTP Short for **HyperText Transfer Protocol**, the underlying protocol used by the World Wide Web. HTTP defines how messages are formatted and transmitted, and what actions Web servers and browsers should take in response to various commands.

The web browser automatically places HTTP into the address for you. You only have to type *www.* (and the address).

If the web address is a bank you will receive a different HTTP. This one will have an address <https://www>. (address). So what's the difference between **http** and **https**?

The 'S' stands for "Secure". If you visit a web site or web page, and look at the address in the web browser, it will likely begin with the following: *http://* . This means that the website is talking to your browser using the regular 'unsecured' language. If you fill out a form on the website, someone might see the information you send to that site.

This is why you never ever enter your credit card number in an http website! But if the web address begins with *https://* , that basically means your computer is talking to the website in a secure code that no one can eavesdrop on.

If a website ever asks you to enter your credit card information, you should automatically look to see if the web address begins with *https://*.

The **HyperText Transfer Protocol** message kindly submitted by Alan Lees from information obtained on the web.

The articles and comments on fake SD & USB cards are not associated with The Penrith Valley Seniors Computing Club Inc . Articles are intended as opinions and items of debate only.



Coffee Break

Question on Software or Operating system.

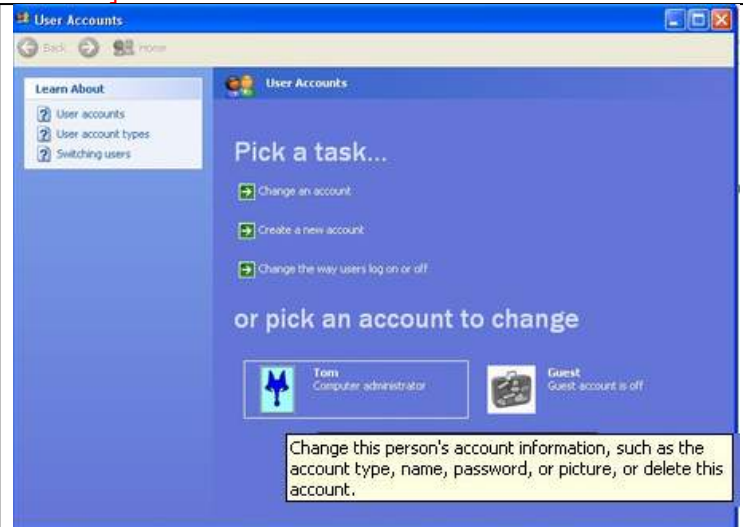
How to Change your Password in Windows XP

A member asked how to change their password in Windows XP? It's not an impractical question as it's a function we wouldn't carry out very often. As the user would be the **Administrator** then he/she would have access to the **Administrator** account. Follow the step below to change your password. First go to **[start]** and click on **[Control Panel]**.

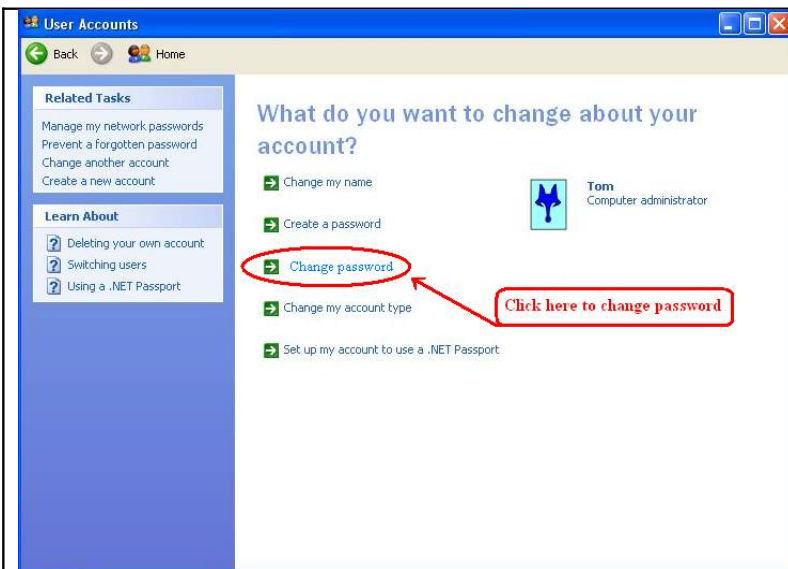
Step (1)



Left click [User Account].



Step (2) Left Click the Account to change.



Step (3) Left click [Change Password].



Step (4) Type in your new password.
Then click the [password] button below to Complete the change.

A secure password should not simply be a proper name or dictionary word combined with a single digit. One method to choose a reasonably secure password is to choose a title of your favourite book or poem and use the first letter of each word combined with a two or three digit number.

Example: 'The **Man** from **Snowy** **River**' followed by your house number.

The password would be **TMFSR168**.