



Penrith Valley Seniors Computing Club Inc

P.O. Box 4063
Penrith
N.S.W. 2751
Tel. 47210609
Fax 47215224

Penrith Valley Seniors Centre
86 Station Street Penrith N.S.W.2750

Email pvscc@internode.on.net

Editor Tom Lehane

May 2006

President: George Bell	Tel: 4721 3681	Purchasing Officer:	
Vice-President: Alan Lees	Tel: 4736 5541	Member: Pat Mitchell	Tel: 9623 4358
Secretary: Zillah Warner	Tel: 4732 4248	Member: Anne Roddick	Tel: 4721 4343
Treasurer: Bert Foster	Tel: 4754 3008	Member: Lorraine Brown	Tel: 4736 5541
Social Committee: Pat Mitchell, Zillah Warner, Anne Roddick		Webmaster: Tom Lehane	Tel: 4721 5375

Visit the clubs web page for training courses www.users.on.net/pvscc/training.htm

<i>Weekly Schedule for Computer Courses</i>	
Mondays 9.30am to 11am Beginners & Do your own thing. Tutor: Alan Lees 11.00 am to 12.30 pm Graphics. Tutor: Zillah Warner	Tuesdays 9.30am to 11am Beginners & Do your own thing 11.00 am to 12.30 pm Graphics (Digital Editing). Tutor Bert Foster
Wednesdays 9.30am to 11am Using the Software. Tutor: Tom Lehane 1pm to 2.30pm Beginners, Internet/Email, and Genealogy Tutor: George Bell	Thursdays: 9.30am to 11am Beginners, Card Making and Do your own thing. Tutors Pat Mitchell & Zillah Warner
Fridays: 9.30am to 11am Beginners & Do your own thing. Tutor Alan Lees	

Local News

Senior's Week proved very popular at the Penrith Valley Computer Club with their open day on Wednesday the 5th of April. Tutors demonstrated to the visiting public various programs from Word Processing, Placing photos on to a DVD to play in your DVD player, Digital photo enhancing, Invitation Card and greeting card making. The club's digital projector was used for demonstrating the use and techniques on digital cameras. Also various ways to achieve particular results when taking photos of landscapes and close-up images.

Images on the right shows tutors with visitors enjoying the open day.



A member asked a question last month on which is the best printer to buy. Like motor cars there are many to choose from and each individual has their favourite make and model.

While printer prices can be a deciding factor and the type of use they intend to use the printer for. Printing invoices or normal letters would not require the user to have a fully functional high output colour printer.

Knowing what most members use their printers for, narrows the answer down to just a few printers.

At the time of writing it must be remembered that by the time members receive this newsletter, better and cheaper models may have been released on to the market.

You can buy colour printers for as little as \$70.00. Most have printer cartridges that contain three colours in the one cartridge and to print plain black text all colours are combined to make up the black colour where by you are using more ink.

If you buy these low price printers you will find that to replace an empty ink cartridge will cost close too the original price of the printer, \$60.00 to \$70.00.

Plain black cartridges cost the same as colour with cheaper models.

You can refill these printer cartridges yourself at a fraction of the cost of a new cartridge, \$20.00 for colour and black.

There are stores that specialize in recycling printer cartridges at fraction of the cost of new ones.

Printer manufactures don't like the idea that the user can refill the printer's cartridge as it's a loss of revenue to them. Printer manufactures maintain that their inks are of a higher quality and using after market ink will give inferior results and could harm the printer.

Some printer manufactures have taken steps to prevent the practice of recycling printer cartridges.

EPSON: All Epson printers use the intelligent cartridge technological which has a chip installed to measure the ink usage. Refilling the cartridge is a simple task but the micro chip informs the printer that the cartridge is empty. Stores that specialize in recycling printer cartridges can deactivate the micro chip so the cartridge functions as normal.

CANON: Recently introduced many new printers to their range and to the surprise of many, have gone down the road of Lexmark and HP in using cartridges with inbuilt print heads in their line-up of printers. Canon has gone one step further by installing the intelligent cartridge technological like Epson. Which measures the ink usage. Also the printer has a micro chip that looks for a refilled or aftermarket cartridge. If the printer detected a foreign or refilled cartridge the chip will be disabled and a warning that this will be memorized by the printer and Canon may not be liable for any warranty claims.

Canon uses Bubble Jet technological where the ink is vaporized by an electric resistor within the nozzle, creating a small gas bubble. Under the pressure

effect, a small quantity of ink is ejected out. Without the printer informing the user that the cartridge is low or has run out of ink the small electric resistor can burn-out. The process relies on a pool of ink to cool the electric resistor.

All Epson printers and most commercial and industrial ink jet printers use a piezoelectric crystal in each nozzle instead of a heating element.

A piezoelectric crystal works like a small pump when a current is applied, the crystal bends, forcing a droplet of ink from the nozzle. So if you run out of ink there is no damage done to the printer.

Piezoelectric ink jet allows for a wider variety of inks than thermal or continuous ink jet but is more expensive.

SUMMING UP

For those who are looking for printers that are cheap to run, perform well and have a good range of ink delivery options, EPSON is a clear winner.

Almost all the new range of Epson printers have the option of compatible cartridges, refill in printer cartridges or continuous flow systems. The new CANON printers with their new technology and expensive cartridges, place their printers in second place.

Both Canon and Epson produce good quality photo prints. These two printers (models below) will print directly on to a printable CD or DVD.

Models compared are Canon PIXMA iP4200 and Epson Stylus Photo R230.

Canon PIXMA iP4200 price \$180.00

Epson Stylus Photo R230 price \$170.00.

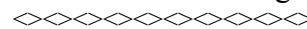
Prices many vary between stores.

Epson replacement cartridges for the above model. Four colours are used in this printer and each cartridge cost \$13.28. Refill cartridges are available at cheaper prices.

Canon replacement cartridges for the above model. Five colour cartridges are used, one black for text printing and four colour cartridges for photo quality printing with one of the of the four been black.

Each cartridge cost \$24.00 each.

At the time of writing no refill cartridges available.



The comments are from the editor's research on printers and their performance and are not associated with The Penrith Valley Seniors Computing Club Inc.

Disclaimer - Articles contributed to this document and published as a service to members; do not necessarily reflect the opinion or policy of PVSCC Inc. Articles are intended as opinions and items of debate only.

The editor has no commercial interest in Canon or Epson printers. His recommendation is from research on both printers. The editors own personal printer is a Canon PIXMA iP4200.

Defrag XP hard drive. Defrag in Windows XP



Coffee Break

Question on Software or Operating system.

Windows XP's Disk Defragmenter looks a little different from the one you'll find in Windows 98 and Windows Me, but it works in a similar way. You can find it by clicking **[Start] [Programs] [Accessories] [System Tools]**

[Disk Defragmenter].

Another quick way to start Defrag is to open **Windows Explorer** Right Click the mouse on **Local Disk (C:)** From the dialog box choose **Properties**.



This properties menu will appear. Click **Tools** Tab then **Defragment Now** button.

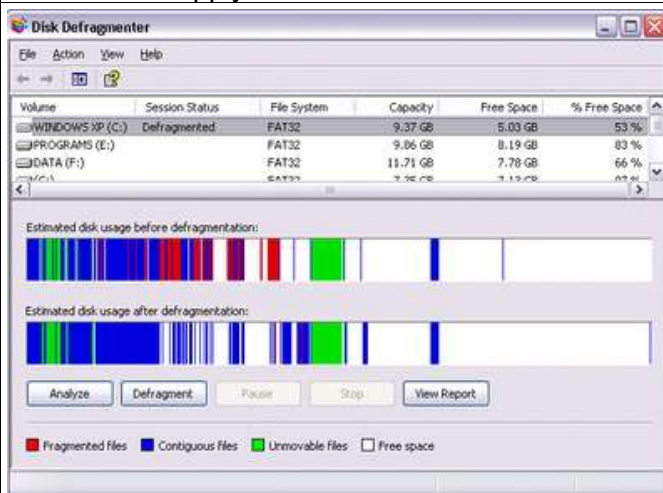
The Windows XP Defragmenter is somewhat smarter than its predecessors and isn't as easily thrown off its stride by background programs. Still, it is better to shutdown any software that runs in the background.

- **Disable your screensaver**
- **The most important one to switch off or close down is your Virus Checking program.**

1. **To end your Virus Checking Program,**
2. **Right Click the program's Icon on the Task Bar.**
3. **In the dialog box Left Click on Exit.**

=====To Disable
your screensaver

1. Right click on the desktop.
2. Select **PROPERTIES**
3. Select the **SCREENSAVER** tab.
4. Select **None** from a drop down list on the left labelled **Screensavers**.
5. Press the **Apply** button and then the **OK** button



XP defragmenter screen.

How often do I need to defrag?

If you do a lot of installing and uninstalling, you should probably defrag at least once per month. more often if needed.

Factors Affecting the Time Required to Defragment a Hard Drive

1. The size of the hard drive
2. The speed of the hard drive, seek time and data transfer rate
3. How badly fragmented the hard drive is
4. A screensaver can slow defragmentation down and sometimes forcing it to restart.
5. Virus checking program can force a restart.