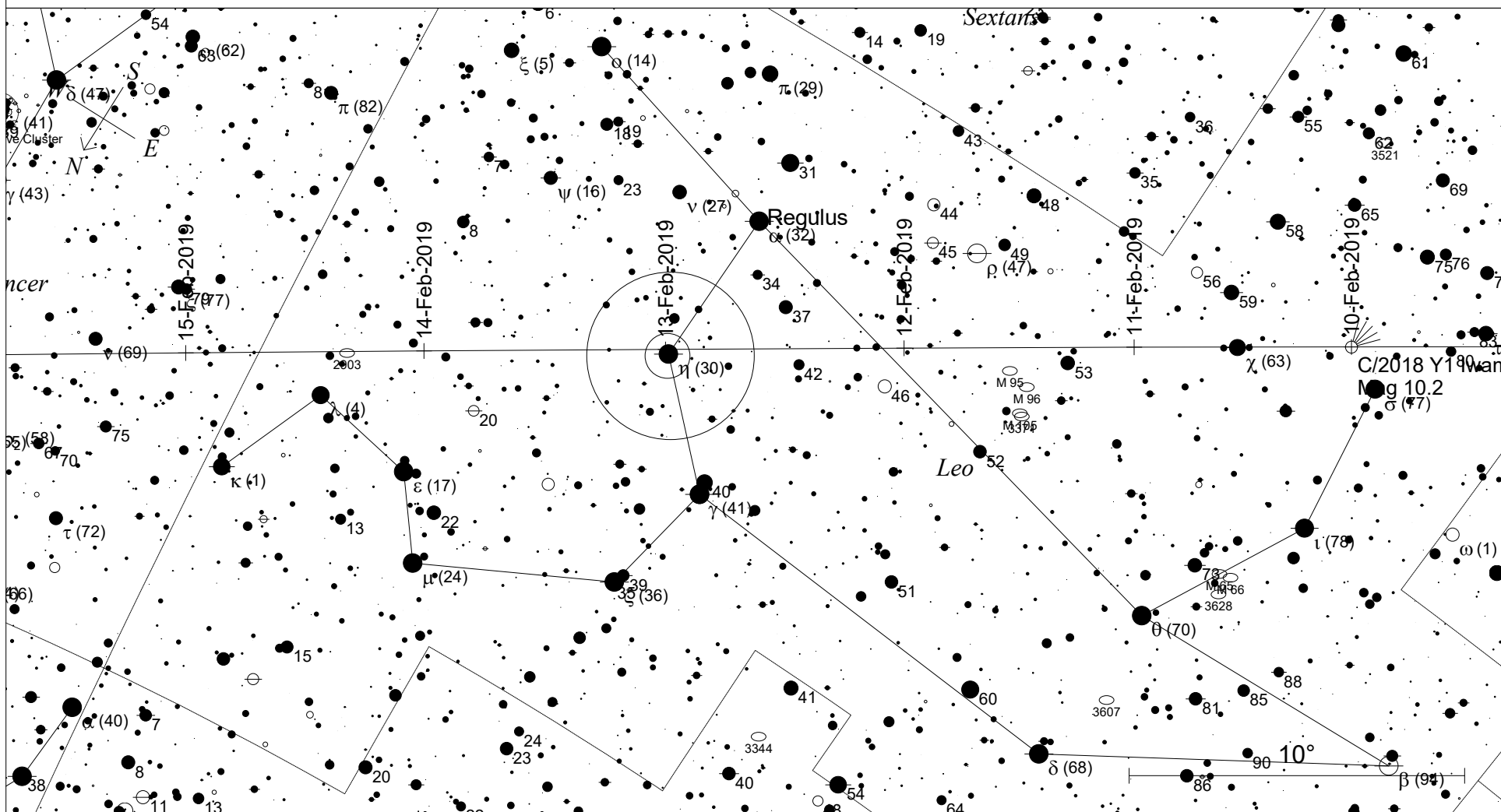


Comet C/2018 Y1 Iwamoto Binocular map



STARS		SYMBOLS		
● <4	● >9	● Multiple star	◻ Dark nebula	△ Radio source
● 5		○ Variable star	⊕ Globular cluster	× X-ray source
● 6		☄ Comet	⊕ Open cluster	○ Other object
● 7		☄ Galaxy	☉ Planetary nebula	
● 8		◻ Bright nebula	☉ Quasar	

Showing the locations of C/2018 for 10-15 February at midnight. The comet is brightest on the 12th when it is closest to Earth. The large circle is the field of view of 10x50 binoculars, the small that of a 25 mm telescope eyepiece.

Local Time: 00:00:00 10-Feb-2019 UTC: 13:30:00 9-Feb-2019 Sidereal Time: 08:01:43
 Location: 34° 55' 12" S 138° 34' 48" E RA: 10h21m09s Dec: +16° 45' Field: 24.0° Julian Day: 2458524.0625