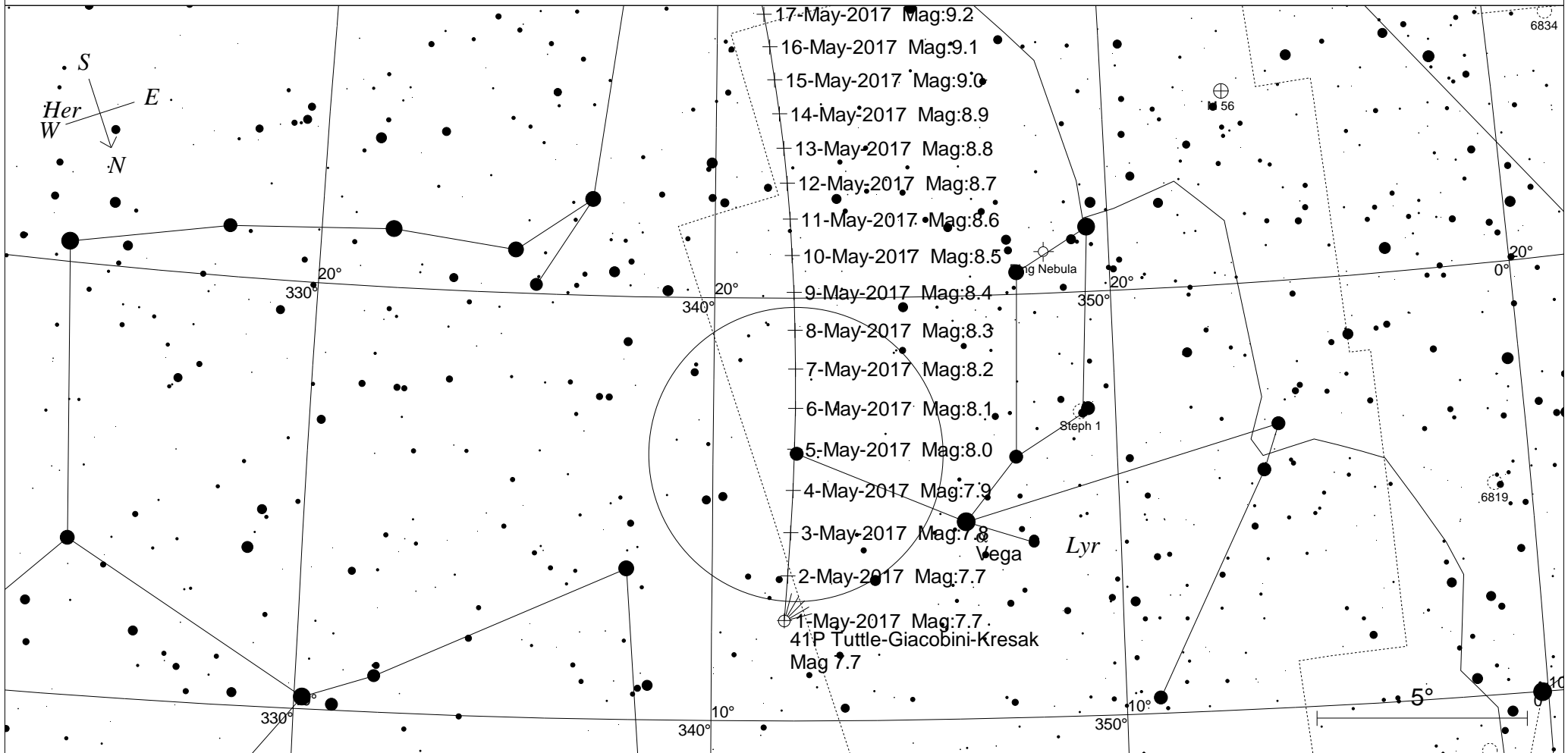


# Comet 41P binocular map



- + 17-May-2017 Mag:9.2
  - + 16-May-2017 Mag:9.1
  - + 15-May-2017 Mag:9.0
  - + 14-May-2017 Mag:8.9
  - + 13-May-2017 Mag:8.8
  - + 12-May-2017 Mag:8.7
  - + 11-May-2017 Mag:8.6
  - + 10-May-2017 Mag:8.5
  - + 9-May-2017 Mag:8.4
  - + 8-May-2017 Mag:8.3
  - + 7-May-2017 Mag:8.2
  - + 6-May-2017 Mag:8.1
  - + 5-May-2017 Mag:8.0
  - + 4-May-2017 Mag:7.9
  - + 3-May-2017 Mag:7.8
  - + 2-May-2017 Mag:7.7
  - + 1-May-2017 Mag:7.7
- 41P Tuttle-Giacobini-Kresak  
Mag 7.7

| STARS |      | SYMBOLS         |                    |                |
|-------|------|-----------------|--------------------|----------------|
| ● <3  | ● >8 | ● Multiple star | ☐ Dark nebula      | △ Radio source |
| ● 4   |      | ○ Variable star | ⊕ Globular cluster | × X-ray source |
| ● 5   |      | ☄ Comet         | ○ Open cluster     | ○ Other object |
| ● 6   |      | ☄ Galaxy        | ⊕ Planetary nebula |                |
| ● 7   |      | ☐ Bright nebula | ⊕ Quasar           |                |

*This map shows the path of 41P Suitable for use with binoculars. The circle is the field of view of 10x50 binoculars*

Local Time: 05:26:09 1-May-2017  
Location: 34° 55' 12" S 138° 34' 48" E

UTC: 19:56:09 30-Apr-2017  
RA: 18h21m46s Dec: +34° 17' Field: 17.8°

Sidereal Time: 19:46:15  
Julian Day: 2457874.3307