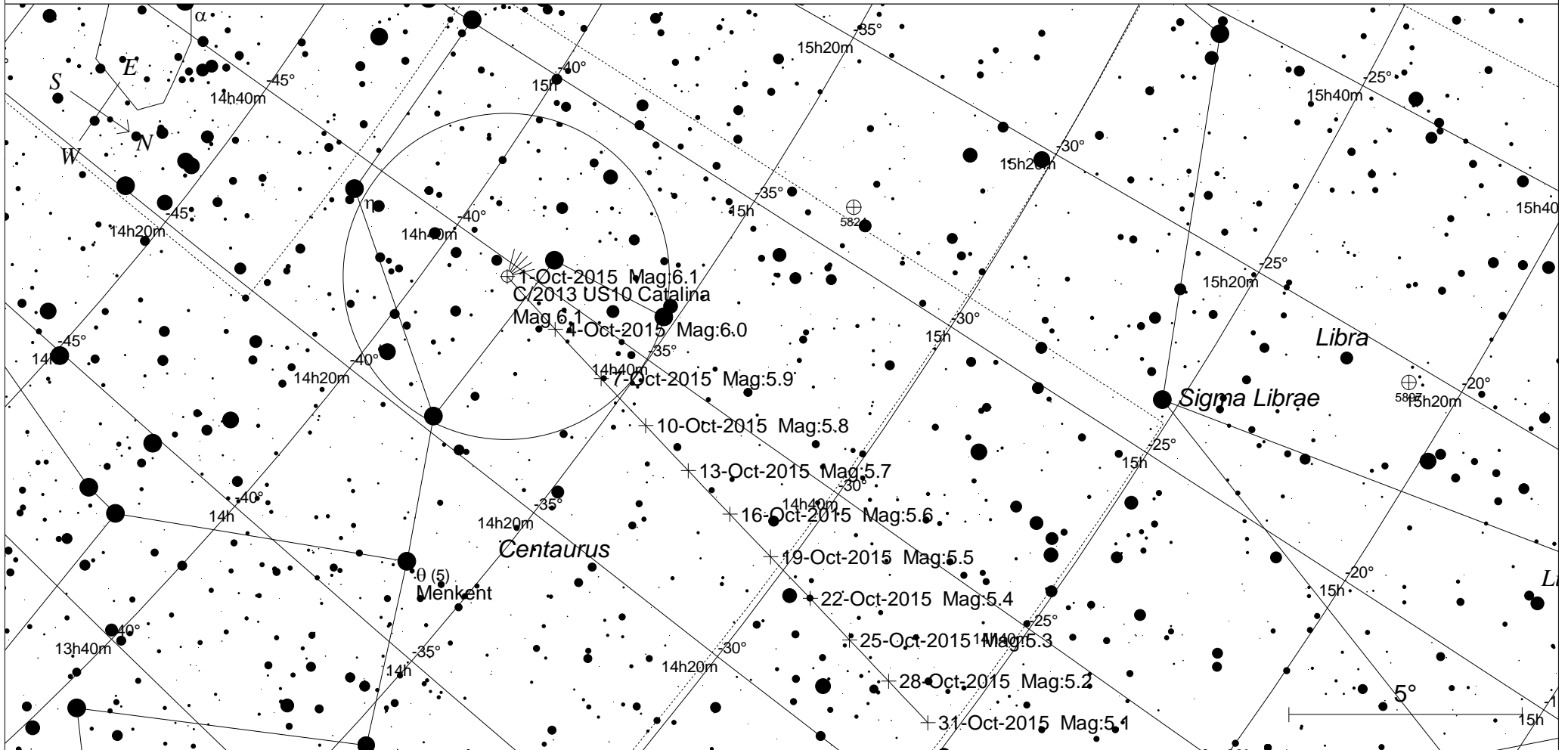


October Sky - Comet C/2013 US10 Catalina Spotters Map



STARS		SYMBOLS		
● <4	● >9	● Multiple star	☐ Dark nebula	△ Radio source
● 5		○ Variable star	⊕ Globular cluster	× X-ray source
● 6		☄ Comet	○ Open cluster	○ Other object
● 7		☉ Galaxy	◇ Planetary nebula	
● 8		☐ Bright nebula	⊗ Quasar	

This map is suitable for use with binoculars to locate comet C/2013 US10 Catalina. Use the Western Horizon map to orient yourself and locate Centaurus. Use this map with binoculars. The large circle is the field of view of 10x50 binoculars.

Local Time: 22:00:00 1-Oct-2015
 Location: 34° 55' 12" S 138° 34' 48" E

UTC: 11:30:00 1-Oct-2015
 RA: 14h46m26s Dec: -32° 26' Field: 16.0°

Sidereal Time: 21:23:51
 Julian Day: 2457296.9792